




# Boat Finder Brokerage Services

*Brokers of Fine Quality Inland Waterways Craft*

 : 01270 760799

 : 07732 366185

 : [sales@boatfinderbrokerage.co.uk](mailto:sales@boatfinderbrokerage.co.uk)

 : [www.boatfinderbrokerage.co.uk](http://www.boatfinderbrokerage.co.uk)

Office address: Edwin Foden Business Centre, Moss Lane, Sandbach, Cheshire CW11 3AE



**REF: 080056**

**Reduced to £59,995**

- 10/6/5/4mm steelwork by CNM Boatbuilders.
- Beta 43 hp marine diesel engine.
- High quality fit-out in oak by Northwich Boat Company.
- Travel pack onboard generator.

- Power Master 1kw pure sine wave inverter.
- Power Master battery charger.
- S/f stove & diesel fired central heating.
- Bosch washing machine.



## **BROKER'S SUMMARY**

60ft Cruiser style narrow boat. 10/6/5/4mm steelwork with cruiser stern by CNM Boatbuilders. High quality fit-out in Oak offering six berth accommodation by Northwich Boat Company. Powered by a 43hp Beta Marine diesel engine with PRM 150 gearbox.

This very high spec. comfortable liveaboard boat is being offered for sale at a very reasonable price. She is fully equipped with everything anyone could need and is ready to go.

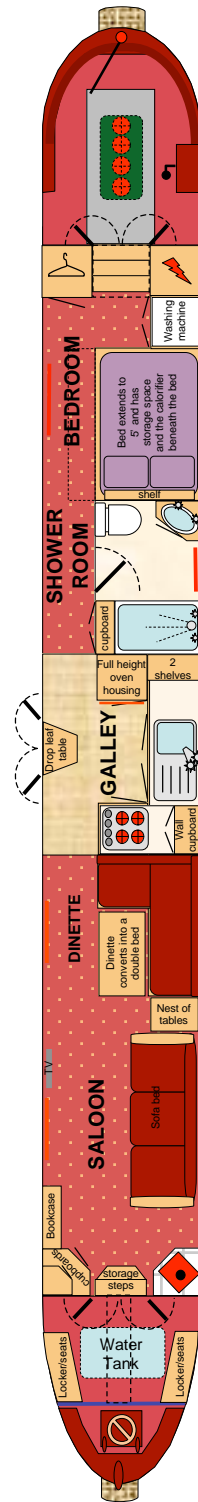
Lying Lancashire

BSSC to May 2011.

---

# LAYOUT DIAGRAM

(not to scale)





### **FROM THE BOW**

From the bow which has a steel gas locker there is a 4'6" self draining well deck with hardwood cratch frame, windows to the front and a zipped and studded cover with clear panels. There are steel locker/seats to either side of the well deck. The headlamp is mounted on the front of the cratch board. The water tank is located beneath the well deck with a surface mounted filler.

### **GENERIC FIXTURES AND FITTINGS**

Ceilings, cabin sides and hull sides are lined in oak faced ply and trimmed with solid oak. All interior wood has been varnished to a gloss finish. There are quality co-ordinated soft furnishings throughout the boat.

### **SALOON 20'**

Steel, half glazed front doors, wood panelled internally open onto the front deck, with storage steps leading down into the saloon.

**Fixed Furniture:** Sofa bed which converts into either a 4' double bed or 2 single beds. Deluxe "L" shaped dinette with sloping backs for added comfort. The dinette converts into a double bed and has storage space beneath the seats. 1 x half height corner cabinet. Under gunwale bookcase.



**Lighting:** 4 x large windows with drop-back openings. 3 x 12v, ceiling lights. 2 x 12v, wall lights.

**Power:** 4 x 240v sockets. 1 x 12v socket.

**Flooring:** Carpet.



**Loose Furniture:** Oak table top with folding legs. Nest of tables.

**Other Features:** Wall mounted flat screen TV and DVD.

**Heating:** Arrow, cast iron, solid fuel stove set on a ceramic tiled hearth and surround. 2 x central heating radiators.



## **GALLEY 8'**

The "U" shaped galley has custom built units with Oak door and drawer fronts. Worktops are cream formica edged in oak with ceramic tiled splash-backs.

**Units:** 1 x large double cupboard that extends into the corners. Full height unit housing the eye level oven and grill with the fridge below and a cupboard above. Freezer housing with matching door.

**Wall units:** 1 x glazed double wall cupboard. 2 x wall mounted shelves.



**Appliances:** Vanette, 4000/2 eye level gas oven and grill. Matching stainless steel, inset, four burner gas hob. Shoreline 12v, fridge. 12v, Shoreline freezer. Inset stainless steel sink and drainer with chrome monobloc mixer tap.

**Other Features:** Drop leaf table.

**Lighting:** 1 x large window with drop-back opening. 1 x set of steel side doors, wood panelled internally. 2 x 12v, ceiling lights.

**Power:** 4 x 240v sockets.

**Flooring:** Solid pine.





### **BATHROOM 8' x 4'**

The cabin bathroom has a white suite comprising:

**Suite:** Large shower enclosure with thermostatically controlled shower and a glazed door. Corner vanity unit with inset porcelain wash basin, chrome taps and a cupboard beneath. Thetford electric flush cassette toilet. Wall mounted mirror.

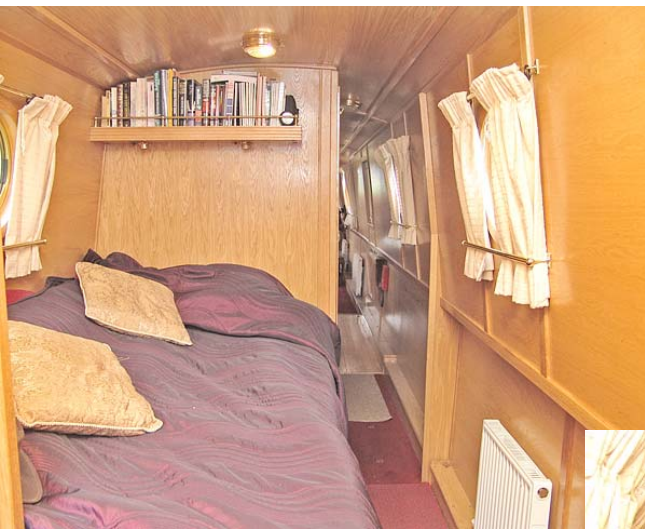
**Storage:** Full height storage cupboard accessed from the corridor.



**Heating:** 1 x towel radiator.

**Lighting:** 1 x porthole with drop-back opening and a further porthole in the corridor. 1 x 12v, ceiling light and a further ceiling light in the corridor.

**Flooring:** Linoleum.



### **BEDROOM 10' 2"**

**Furniture:** Extending 5' double bed with storage space and calorifier in the base. Over bed shelf with fiddle rail. Full height wardrobe. Washing machine housing with storage cupboard above. Electrical cupboard. Rear storage steps.

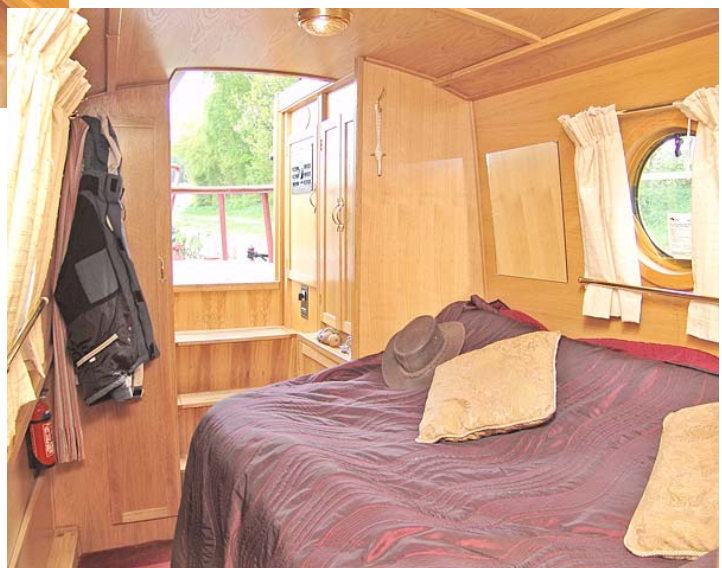
**Appliances:** Bosch washing machine.

**Lighting:** 2 x portholes with drop-back openings. 2 x 12v, ceiling lights. 2 x 12v reading lights.

**Power:** 2 x 240v sockets.

**Heating:** 1 x central heating radiator.

**Flooring:** Tile effect laminate.



## CRUISER DECK & STERN 7' 6"



A set of steel rear doors, wood panelled internally with sliding roof hatch lead from the bedroom to the cruiser deck where the engine is housed under the deck panels. The deck boards are marine ply with anti slip deck tread.

**Other Features:** Metal taff rail with seat.

**Controls:** The column mounted single lever engine control is located on the port side. The control panel is mounted just inside the rear doors on the port side.



## SPECIFICATIONS

### **BUILDER**

Steelwork by CNM Boatbuilders. Top quality fit-out in oak by Northwich Boat Company.

### **HULL & SUPERSTRUCTURE**

Built 2007  
Cruiser Style  
10/6/5/4mm

### **INSULATION**

Spray-foam insulation behind the cabin linings.

### **BALLAST**

Concrete slabs under the floor boards.

### **DIMENSIONS**

Overall Length:	60'
Cabin Length:	46' 2"
Width:	6' 10"
Interior Headroom:	6' 7"
Well Deck:	4' 6"
Draught	2'

### **WINDOWS, DOORS & HATCHES**

**Port:** 3 x large windows with drop-back openings. 2 x large portholes with drop-back openings.

**Starboard:** 2 x large windows with drop-back openings. 2 x large portholes with drop-back openings. 1 x set of steel side doors wood panelled internally.

**Front:** Steel hatch on bow locker. Steel, half glazed front doors, wood panelled internally.

**Rear:** Steel stern doors and sliding roof hatch, wood panelled internally.

### **ENGINE & TRANSMISSION**

The boat is powered by a 43hp Beta, 4 cylinder, water cooled, marine diesel engine coupled to a PRM 150 gearbox with 2:1 reduction, turning the propeller. The exhaust is lagged, silenced and vents out from under the side deck. The engine powers twin 12v alternators to charge the start battery and 4 leisure batteries.

### **WATER**

455 litre stainless steel water tank housed beneath the well deck. Water pump with pressure switch housed behind the front step. Twin coil calorifier heated by the engine's heat exchanger and/or the Mikuni diesel fired central heating boiler.

### **HEATING**

Heating is provided by the Arrow solid fuel stove in the saloon and the Mikuni diesel fired boiler running 4 radiators.

### **ELECTRICS**

240v circuit with RCD.

240v landline socket.

12v lights throughout protected by fuses.

2 x 12v, 150/ 45 amp/hr engine driven alternators.

1 x 12v 110 amp/hr engine start battery.

4 x 12v 110 amp/hr deep cycle leisure batteries.

Travelpak onboard diesel generator.

Power Master 1kw pure sine wave inverter.

Power Master 50 amp battery charger.

### **GAS**

1 x 13.5kg Propane cylinder housed in the bow locker, provides gas to the oven, grill and hob.

### **FIRE SAFETY**

3 x Dry Powder extinguishers

1 x Fire Blanket

### **EXTERIOR FINISH**

The boat was painted in quality coach enamels when built and is in good condition. The hull is protected by black bitumen and 4 anodes.

### **ADDITIONAL ITEMS OF INVENTORY**

The boat comes equipped with a normal cruising inventory including ropes and fenders. Any additional items not listed must be negotiated separately with the owners.

**PLEASE NOTE:** The information contained in this brochure is based on our own inspection and information provided by the owner and is intended as a sales aid only to assist you to decide whether you would like to move to the next stage and view the boat for yourself. Measurements can only be taken as approximate. Nothing contained herein constitutes a contract or offer. This is not a survey. We always recommend that a full survey is carried out prior to purchase.