




Boat Finder Brokerage Services

Brokers of Fine Quality Inland Waterways Craft

 : 01270 760799

 : 07732 366185

 : sales@boatfinderbrokerage.co.uk

 : www.boatfinderbrokerage.co.uk

Office address: Edwin Foden Business Centre, Moss Lane, Sandbach, Cheshire CW11 3AE



REF: 090009

£64,995

- Quality steelwork with side doors and cruiser stern by Collingwood Boatbuilders.
- 35hp Isuzu marine diesel engine with PRM 120D2 hydraulic gearbox.
- Light and airy fit-out in ash and white oak with popular reverse lay-out offering 4 berth accommodation.
- Bow-thruster tube fitted.

- Spray foam insulation.
- Stainless steel water tank.
- 3kw inverter/charger.
- Diesel fired central heating & S/F stove.
- Pullman dinette.
- Washing machine.
- Available with mooring.

*Boat Finder Brokerage Services is a trading name of Boatfinder Brokerage Services Ltd. Reg'd No. 4923033
Reg'd Address: Edwin Foden Business Centre, Moss Lane, Sandbach, Cheshire CW11 3AE*



BROKER'S SUMMARY

New 57ft Cruiser style narrow boat. Quality steelwork with side doors and cruiser stern by Collingwood Boatbuilders. Light and airy fit-out in ash and white oak by Vogue Property Developments. Powered by a Isuzu 35hp, 4 cylinder marine diesel engine.

Quality new build, beautifully presented to a popular reverse layout. This beautiful boat is currently being fitted out with much thought and care by the builder and there is the opportunity to have input into the final specification. She will make an ideal live-aboard or long term cruiser for 2 people or a luxurious family holiday boat. The exterior has been left plain for your own decoration. There is a permanent mooring available with the boat near Lichfield.

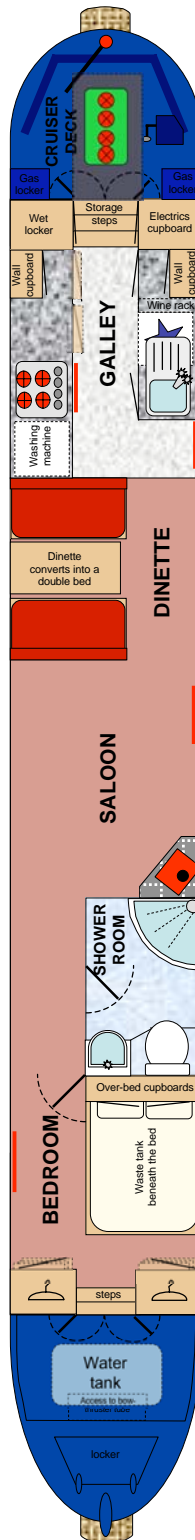
The Photographs shown are of a previously completed boat and are given as an example of the fit and finish.

As this boat is currently in build some of the features described within this brochure may be subject to change.

NEW BSSC.

LAYOUT DIAGRAM

(not to scale)





FROM THE BOW

From the bow which holds a steel locker, there is a 3'8" open self draining well deck. There is access to the bow-thruster tube from the well deck. The stainless steel water tank is located beneath the well deck with a surface mounted filler. The headlamp is mounted on the front bulkhead.

GENERIC FIXTURES AND FITTINGS

The ceilings, cabin sides and hull sides are lined with ash faced plywood and trimmed with white oak. All the interior wood has been varnished to a satin finish. There are curtains or blinds to all windows.

BEDROOM 10' 5"

Hardwood, 2/3 glazed front doors, ash lined internally open out onto the front deck with steps down into the bedroom.

Furniture: Fixed double bed (with storage/waste tank beneath). 2 x single wardrobes with drawers below. 1 x double over-bed cupboard.



Lighting: 2 x large portholes with top hopper openings. 6 x 12v, LED downlights.

Heating: 1 x central heating radiator.

Power: 2 x 240v sockets. 1 x 12v socket. 1 x TV aerial point.

Flooring: Carpet.

SHOWER ROOM 6' x 4'

The cabin shower room is lined with marble effect laminate and has a white suite comprising:

Suite: Quadrant shower enclosure with chrome shower attachment and mixer taps. Vanity unit with integral wash basin, chrome mixer tap and a cupboard beneath, toilet (either pump out or cassette).



Heating: Chrome towel radiator.

Flooring: TBC

Lighting: 1 x large porthole with privacy glass and top hopper opening and a further porthole in the corridor. 5 x 12v, LED down lights and a further 2 Led down lights in the corridor.

SALOON & DINETTE 16' 5"

The spacious saloon has room for the furniture of your choice.

Fixed Furniture: L-Shape or Pullman dinette with bench style seats padded and upholstered in hard wearing material. The dinette converts into a double bed and has storage space beneath the seats.

Loose Furniture: Ash table top with folding legs.



Heating: Solid fuel stove set on a raised hearth with a tiled surround.
1 x central heating radiator.

Lighting: 2 x large windows with top hopper style opening vents. 1 x set of steel side doors, ash lined internally.
10 x 12v, LED down lights.

Power: 4 x 240v sockets. 1 x 12v socket.
1 x TV aerial point.

Flooring: TBC



GALLEY 9' 2"



The rear galley has custom built units with white door and drawer fronts. Worktops are granite effect laminate.

Base units: 2 x single cupboards with drawers above. 2 x single cupboards. Integral wine rack. 1 x full height cupboard. Oven housing. Fridge housing. Washer housing. Rear storage steps. Electrical cupboard.

Wall Cupboards: 2 x single wall cupboards.

Appliances: Gas oven and grill. Inset 4 burner gas hob. 12v fridge with icebox. Washing machine. Stainless steel, inset sink and drainer with chrome monobloc tap.

Lighting: 2 x large windows with top hopper style opening vents. 8 x 12v, LED down lights.

Heating: 1 x small central heating radiator.

Flooring: TBC

Power: 4 x 240v sockets.



CRUISER DECK & STERN 7' 6"

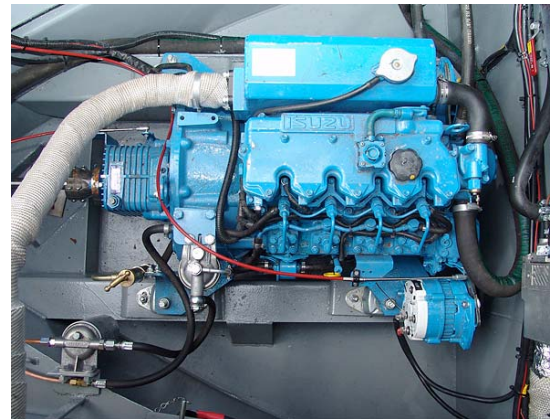


Steel rear doors ash lined internally with sliding roof hatch lead onto the cruiser deck and steering position where there are access panels to the engine and batteries. There are gas locker/seats to either side of the deck.

Controls: The column mounted single lever engine control is on the port side.

Other Features: Steel Taff rail/seat.

Flooring: Marine ply boards with anti-slip deck tread.



SPECIFICATIONS

BUILDER

Quality steelwork by Collingwood Boatbuilders. Fit-out in ash by Vogue Property Developments.

HULL & SUPERSTRUCTURE

New
Cruiser Style
10/6/5/4mm

INSULATION

Spray-foam insulation behind the cabin linings.

BALLAST

Concrete slabs under the floor boards.

DIMENSIONS

Overall Length:	57'
Cabin Length:	42'
Width:	6' 10"
Interior Headroom:	6' 10"
Well Deck:	3' 8"
Draught	18"

WINDOWS, DOORS & HATCHES

Port: 2 x large windows with top hopper openings. 2 x large portholes with top hopper openings. 1 x set of steel side doors wood panelled internally.

Starboard: 2 x large windows with top hopper openings. 2 x large portholes with top hopper openings

Front: Steel hatch on bow locker. Hardwood, 2/3 glazed front doors, wood panelled internally.

Rear: Steel stern doors and sliding roof hatch, wood panelled internally.

ENGINE & TRANSMISSION

The boat is powered by a 35hp Isuzu, 4 cylinder, water cooled, marine diesel engine coupled to a PRM 120D2 gearbox with 2:1 reduction, turning the propeller. The exhaust is lagged, silenced and vents out from under the side deck. The engine powers twin 12v alternators to charge the start battery and 4 leisure batteries.

BOW-THRUSTER

Bow-thruster tube fitted.

WATER

150 gallon stainless steel water tank housed beneath the well deck. Water pump with pressure switch and accumulator is housed behind the front step. Twin coil calorifier heated by the engine's heat exchanger, 240v immersion and/or the diesel fired central heating boiler.

HEATING

Heating is provided by the solid fuel stove in the saloon and the diesel fired boiler running 4 radiators.

ELECTRICS

240v circuit with RCD.
240v landline socket.
12v lights throughout protected by fuses.
2 x 12v, 80 amp/hr engine driven alternators.
1 x 12v 110 amp/hr engine start battery.
4 x 12v 105 amp/hr deep cycle leisure batteries.
3kw inverter/charger.

GAS

1 x 15kg Propane cylinder housed in the stern locker, provides gas to the oven, grill and hob.

FIRE SAFETY

3 x Dry Powder extinguishers
1 x Fire Blanket

EXTERIOR FINISH

The boat is painted in quality coach enamels when built. The hull is protected by black bitumen and 4 anodes.

ADDITIONAL ITEMS OF INVENTORY

The boat comes equipped with a normal cruising inventory including ropes and fenders. Any additional items not listed must be negotiated separately with the owners.

MOORING INFORMATION

Permanent moorings are available with this boat.

PLEASE NOTE: The information contained in this brochure is based on our own inspection and information provided by the owner and is intended as a sales aid only to assist you to decide whether you would like to move to the next stage and view the boat for yourself. Measurements can only be taken as approximate. Nothing contained herein constitutes a contract or offer. This is not a survey. We always recommend that a full survey is carried out prior to purchase.