



Boat Finder Brokerage Services

Brokers of Fine Quality Inland Waterways Craft

 : 01270 760799

 : 07732 366185

 : sales@boatfinderbrokerage.co.uk

 : www.boatfinderbrokerage.co.uk

Office address: Edwin Foden Business Centre, Moss Lane, Sandbach, Cheshire CW11 3AE



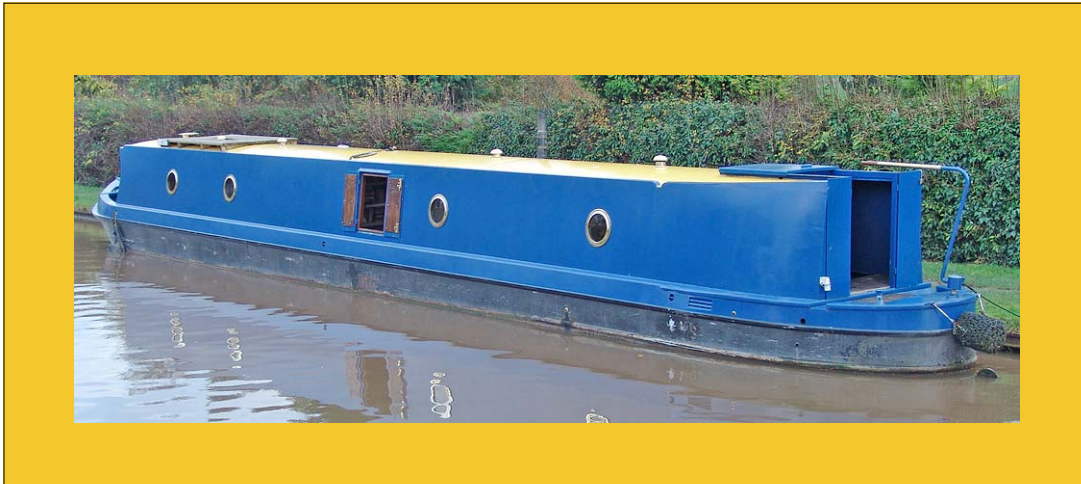
REF: 090010

£44,995

- Quality steelwork with side doors and trad stern by Cheshire Narrowboats.
- 38hp Beta marine diesel engine with PRM 120 hydraulic gearbox.
- Beautifully refitted using reclaimed wood.

- Reverse lay-out offering 3 berth accommodation.
- Spray foam insulation.
- Stainless steel water tank.
- Diesel fired central heating & S/F stove.

*Boat Finder Brokerage Services is a trading name of Boatfinder Brokerage Services Ltd. Reg'd No. 4923033
Reg'd Address: Edwin Foden Business Centre, Moss Lane, Sandbach, Cheshire CW11 3AE*



BROKER'S SUMMARY

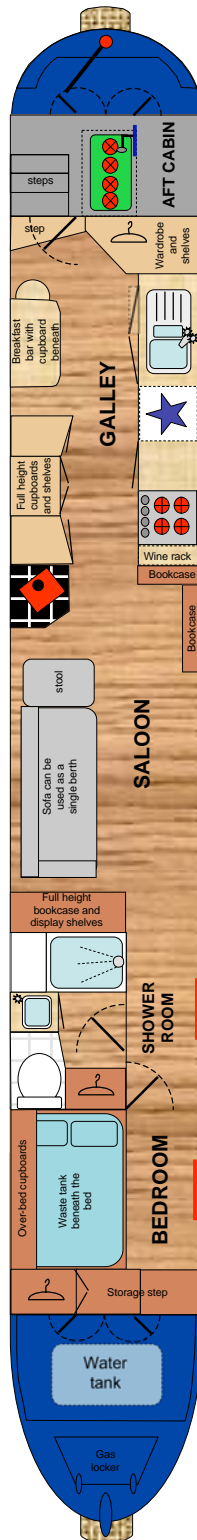
57ft Trad style narrow boat. Quality steelwork with side doors and trad stern by Cheshire Narrowboats. Beautifully fitted by the current owners using reclaimed wood, offering reverse lay-out 3 berth accommodation. Powered by a Beta 38hp, 4 cylinder marine diesel engine.

The owners of this boat have lived on her for the past 2 years. They have cleverly fitted her out using a pleasing eclectic mix of materials. She has been a well cared for and loved boat and has a layout designed to maximize comfort and storage. She was blacked in July 2009 and repainted last year.

BSSC to January 2013.

LAYOUT DIAGRAM

(not to scale)





FROM THE BOW

From the bow which holds the steel gas locker, there is a 3' 7" open self draining well deck. The stainless steel water tank is located beneath the well deck with a surface mounted filler. The headlamp is mounted on the front bulkhead.

GENERIC FIXTURES AND FITTINGS

The ceilings, cabin sides and hull sides are lined with plywood and have either been painted or wall papered. All the interior wood has been varnished to a gloss finish. There are curtains or blinds to all windows. Flooring throughout is reclaimed pine.

BEDROOM 8' 9"



Steel front doors, wood lined internally open out onto the front deck with a large storage step down into the bedroom.

Furniture: Fixed double bed with open storage space and waste tank beneath.
1 x full height double wardrobe.
2 x large over-bed cupboards.

Lighting: 2 x fully removable, brass portholes. 2 x 12v, halogen wall lights.
2 x 12v, halogen reading lights beneath the over-bed cupboards

Heating: 1 x central heating radiator.

Power: 2 x 240v sockets.





SHOWER ROOM 7' 1" x 4'

The cabin shower room has a white suite comprising:

Suite: Feature tiled shower enclosure with large chrome shower head and mixer taps. Vanity unit with under slung wash basin, chrome mixer tap and a cupboard beneath. Vetus electric flush pump-out toilet with remote waste tank.



Storage: Full height wardrobe accessed from the corridor.

Lighting: 1 x fully removable, brass porthole and a further porthole in the corridor. 1 x 12v, halogen down light. 1 x light tube in the shower (providing natural light from the roof).

Heating: 1 x central heating radiator in the corridor.

SALOON 16' 5"



Fixed Furniture: Full height shelving unit and bookcase. Under gunwale bookcase and display shelves.

Loose Furniture: Large flexible sofa, which can be used as a single berth.

Heating: Valour Willow solid fuel stove set on a ceramic tiled hearth and surround.



Lighting: 3 x fully removable, brass portholes, one with privacy glass. 2 x sets of steel side doors, wood lined internally. 3 x 12v, halogen wall lights.

Power: 2 x 240v sockets. 2 x 12v sockets.



GALLEY 12'



The rear galley has custom built units with solid oak door and drawer fronts. Worktops are solid beech block.

Base units: 1 x double cupboard with drawer above. 1 x single cupboard. 1 x full height unit with shelves and a large cupboard. Full height storage cupboard/wardrobe. Breakfast bar with cupboard beneath. Oven housing. Fridge housing.

Wall Cupboards: Wall mounted shelves.

Appliances: Stoves slot in gas oven and grill with four burner hob and a glazed splash-back/lid. Coolzone 12v, fridge freezer. Stainless steel, inset 1 ½ sink and drainer with chrome monobloc tap.

Lighting: 2 x fully removable, brass portholes. 8 x 12v, halogen wall lights. 1 x 12v, halogen ceiling light in the rear cupboard.



Power: 2 x 240v sockets in rear cupboard. 1 x 12v socket beneath breakfast bar.

TRAD AREA 4' 6" & STERN 3' 2"

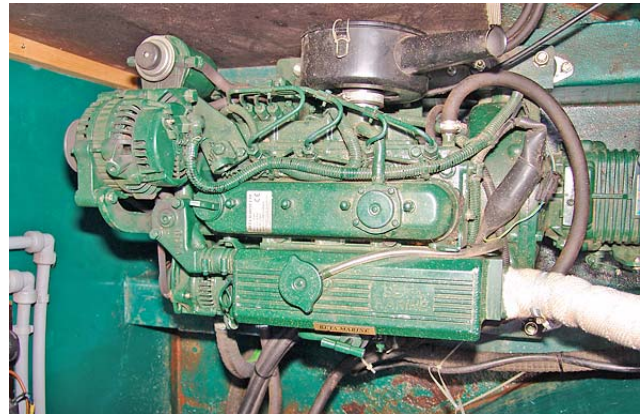
A door leads from the galley to the trad area where there are access panels to the engine and batteries. Steel rear doors, wood lined internally with sliding roof hatch lead to the trad deck and steering position.

Controls: The single lever engine control is just inside the rear doors on the port side.



Lighting: 1 x 12v wall light.

Flooring: Marine ply boards with anti-slip deck tread.



SPECIFICATIONS

BUILDER

Quality steelwork by Cheshire Narrowboats. Refit in reclaimed wood by the current owners

BUILD DETAILS

Built in 2008
Trad Style
10/6/5/4mm

INSULATION

Spray-foam insulation behind the cabin linings.

BALLAST

Concrete slabs under the floor boards.

DIMENSIONS

Overall Length:	57'
Cabin Length:	45' 3"
Width:	6' 10"
Interior Headroom:	6' 5"
Well Deck:	3' 7"
Draught	1' 11"

WINDOWS, DOORS & HATCHES

Port: 4 x fully removable, brass portholes. 1 x set of steel side doors, wood lined internally.

Starboard: 5 x fully removable, brass portholes. 1 x set of steel side doors, wood lined

Front: Steel hatch on bow locker. Steel front doors, wood lined internally.

Rear: Steel stern doors and sliding roof hatch, wood lined internally.

ENGINE & TRANSMISSION

The boat is powered by a 38hp Beta Marine, 4 cylinder, water cooled, diesel engine coupled to a PRM 120 gearbox with 2:1 reduction, turning the propeller. The exhaust is lagged, silenced and vents out from under the side deck. The engine powers twin 12v alternators to charge the start battery and 4 leisure batteries.

WATER

The stainless steel water tank housed beneath the well deck. Water pump with pressure switch is located adjacent to the tank. Twin coil calorifier heated by the engine's heat exchanger, 240v immersion and/or the Webasto diesel fired central heating boiler.

HEATING

Heating is provided by the Willow solid fuel stove in the saloon and the Webasto diesel fired boiler running 2 radiators.

ELECTRICS

240v circuit with RCD.

240v landline socket.

12v lights throughout protected by fuses.

2 x 12v, 40/100 amp/hr engine driven alternators.

1 x 12v, 110 amp/hr engine start battery.

4 x 12v, 110 amp/hr gel sealed deep cycle leisure batteries.

GAS

2 x 15kg Propane cylinders housed in the bow locker, provide gas to the oven, grill and hob.

FIRE SAFETY

3 x Dry Powder extinguishers

1 x Fire Blanket

EXTERIOR FINISH

The boat was repainted in July 2011. The boat was last docked for blacking in 2009. The hull is protected by 4 anodes.

ADDITIONAL ITEMS OF INVENTORY

The boat comes equipped with a normal cruising inventory including ropes and fenders. Any additional items not listed must be negotiated separately with the owners.

MOORING INFORMATION

There are no moorings available with this boat.

PLEASE NOTE: The information contained in this brochure is based on our own inspection and information provided by the owner and is intended as a sales aid only to assist you to decide whether you would like to move to the next stage and view the boat for yourself. Measurements can only be taken as approximate. Nothing contained herein constitutes a contract or offer. This is not a survey. We always recommend that a full survey is carried out prior to purchase.