




# Boat Finder Brokerage Services

*Brokers of Fine Quality Inland Waterways Craft*

 : 01270 760799

 : 07732 366185

 : sales@boatfinderbrokerage.co.uk

 : www.boatfinderbrokerage.co.uk

Office address: Edwin Foden Business Centre, Moss Lane, Sandbach, Cheshire CW11 3AE

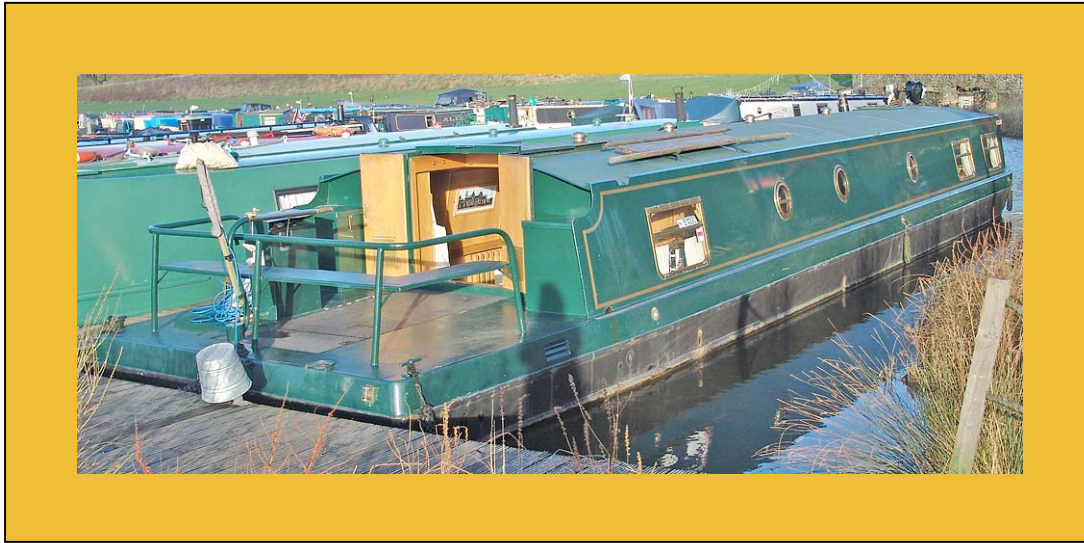


**REF: 090013**

**£79,995**

- Quality steelwork with square cruiser stern, seating and a Boston style bow by Liverpool Boats.
- Professional fit-out offering 4 berth accommodation in two separate cabins.
- Isuzu 70hp marine diesel engine with PRM 260 hydraulic gearbox.
- Bow-thruster tube fitted.

- 3.5kva Travel Pak generator.
- Sterling 1800w inverter.
- Trickle battery charger.
- Stainless steel water tank.
- Diesel fired central heating & S/F stove.
- Mooring available.



## **BROKER'S SUMMARY**

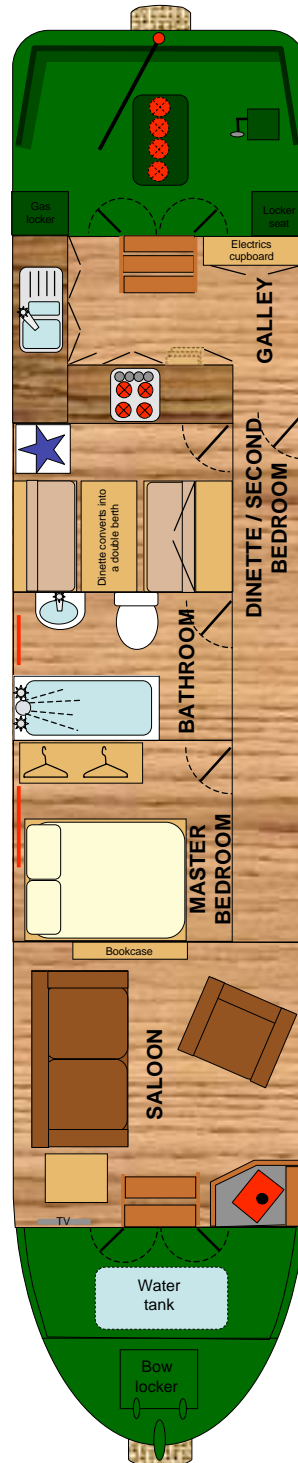
**57' x 11' Cruiser style wide beam.** Quality steelwork with square cruiser stern, seating and a Boston style bow. Professional fit-out with a two cabin reverse lay-out by. Powered by a Isuzu, 70hp marine diesel engine with a PRM 260 gearbox.

A very well built and maintained, live-aboard wide beam boat with the flexibility of two bedrooms if required. Large square cruiser stern with seating making it easy to entertain or enjoy the better weather on deck. She is fully equipped with everything required for a hassle free life afloat and ready to move in or cruise away. She is based within commuting distance of Manchester.

BSSC to February 2014.

# LAYOUT DIAGRAM

(not to scale)





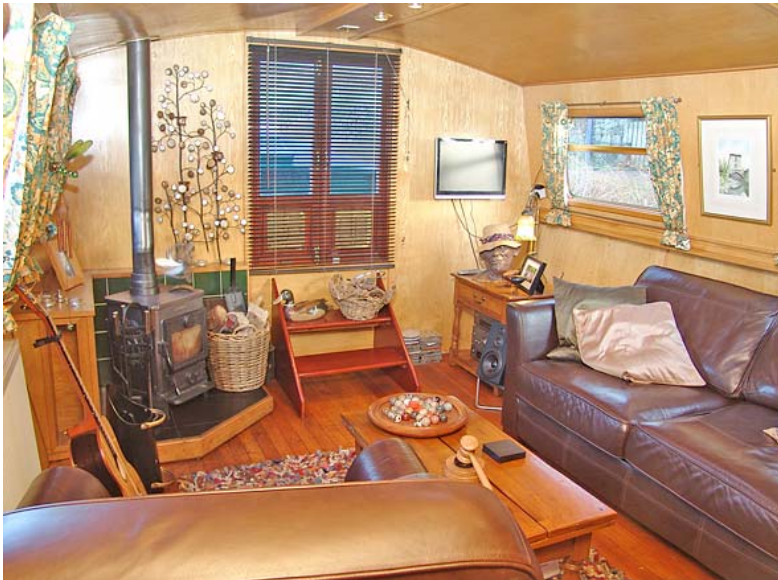
### **FROM THE BOW**

From the bow which has a steel storage locker there is an open 4'8" self draining well deck. The headlamp is mounted on the roof. The stainless steel water tank is located beneath the well deck with a surface mounted filler.

### **GENERIC FIXTURES AND FITTINGS**

The ceilings, cabin sides and hull sides are lined with oak faced plywood and trimmed with solid oak. All the interior wood has been varnished to a gloss finish. There are curtains or blinds to all windows.

### **SALOON 11' 8"**



Hardwood 2/3 glazed front doors, open out on to the front deck with steps leading down into the open plan saloon.

**Loose Furniture:** Free standing furniture and two piece leather suite available by separate negotiation.

**Other Features:** 22" flat screen wall mounted television.

**Lighting:** 4 x large windows with top hopper style opening vents. 4 x 12v, halogen ceiling lights. 2 x 12v LED wall lights. 1 x Houdini hatch.

**Heating:** Morso solid fuel stove set on a raised hearth with ceramic tiled surround. 1 x central heating radiator.

**Power:** 4 x 240v sockets. 1 x 12v socket.

**Flooring:** Mahogany floorboards.



## **MASTER BEDROOM 9' x 8'**



**Furniture:** 5' fixed double bed with waste tank and storage space in the base. Free standing wardrobe.

**Lighting:** 1 x porthole with top hopper style opening vent. 2 x 12v, halogen ceiling lights.

**Heating:** 1 x central heating radiator.

**Power:** 2 x 240v sockets.

**Flooring:** Oak flooring.

**Corridor Lighting:** 3 x portholes. 3 x battery LED down lights.



## **BATHROOM 6' x 8'**



The spacious cabin bathroom has a white suite comprising:

**Suite:** Full size bath with chrome telephone style shower and mixer taps. Porcelain pedestal wash basin with chrome mixer tap. Macerator pump-out toilet with remote holding tank.

**Other Features:** Plumbing and electrics for a washing machine.

**Heating:** 1 x towel rail radiator.

**Lighting:** 1 x porthole with drop back opening and privacy glass. 3 x 12v, halogen ceiling lights.

**Flooring:** Oak flooring.



## DINETTE / BEDROOM TWO 7' x 8'



**Furniture:** Pullman dinette with bench style seats. Oak table top with desmo legs. The dinette converts into a double bed and has storage space beneath the seats. Large wall mounted cupboard.

**Other Features:** Large serving hatch from the galley.

**Lighting:** 1 x porthole with top hopper style opening vent. 2 x 12v, halogen ceiling lights.

**Power:** 2 x 240v sockets.

**Flooring:** Oak flooring



## **GALLEY 7'**

The galley has custom built cabinets with painted door and drawer fronts. Worktops are solid oak.

**Base Units:** 1 x corner cupboard with pull-out carousel style rack. 2 x double cupboards. 1 x 3 drawer unit. Oven housing.

**Wall Units:** Electrical control cupboard.

**Other Features:** Wooden gate to enclose galley. Serving hatch through to the dinette.

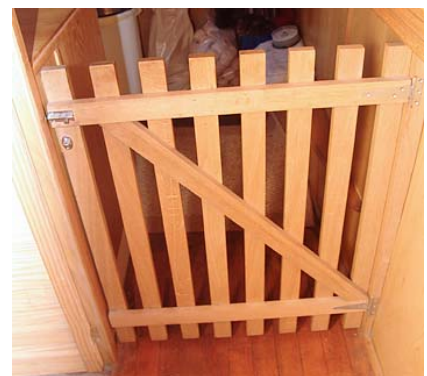


**Appliances:** Space and services for a single or double oven. Bosch, stainless steel, inset four burner gas hob. Microwave. 240v, Fridgemaster fridge freezer located in the dinette. Stainless steel, inset 1 1/2 sink and drainer with chrome monobloc tap.

**Lighting:** 1 x large window with top hopper style opening vent. 1 x porthole. 8 x 12v, halogen ceiling lights.

**Power:** 2 x 240v sockets.

**Flooring:** Oak flooring.



## CRUISER DECK & STERN 8'



**Other Features:** Steel Taff rail and seating.

Steel rear doors, wood lined internally with sliding roof hatch lead from the galley to the cruiser deck and steering position. There are lift up access panels to the engine and batteries. Steel gas locker/seats to either side of the deck.

**Controls:** The column mounted single lever engine control is on the port side. .



## SPECIFICATIONS

### **BUILDER**

Quality steelwork with square cruiser stern and Boston style bow by Liverpool Boats. Professional fit-out in oak.

### **BUILD DETAILS**

Built in 2006  
Cruiser style wide beam  
10/6/5/4mm

### **INSULATION**

Spray foam insulation behind the cabin linings.

### **BALLAST**

Concrete slabs beneath the floorboards.

### **DIMENSIONS**

Overall Length:	57'
Cabin Length:	48' 8"
Width:	11'
Interior Headroom:	6' 8"
Well Deck:	4' 8"
Cruiser Deck	8'
Draught	Not Stated

### **WINDOWS, DOORS & HATCHES**

**Port side:** 1 x large window with top hopper style opening vent. 4 x portholes.

**Starboard side:** 2 x windows with top hopper style opening vents. 3 x portholes with top hopper opening vents.

**Front:** Hardwood 2/3 glazed front doors.

**Rear:** Steel rear doors, wood lined internally with sliding roof hatch.

**Roof:** 1 x Houdini hatch.

### **ENGINE & TRANSMISSION**

The boat is powered by a Isuzu, 70 hp, 4 cylinder, marine diesel engine coupled to a PRM 260 hydraulic gearbox with 2:1 reduction, turning the propeller. The exhaust is lagged, silenced and vents out from under the side deck.

The engine powers twin alternators to charge the start battery and the 5 leisure batteries.

### **BOW-THRUSTER**

Bow-thruster tube fitted.

### **WATER**

300 gallon stainless steel water tank is located beneath the well deck. Water pump with pressure switch and accumulator is located adjacent to the tank. Twin coil calorifier is heated by the 240v emersion heater, the engine heat exchanger and/or the diesel fired central heating boiler.

### **HEATING**

Heating is provided by the solid fuel stove in the saloon and the Eberspacher diesel fired central heating boiler running 4 radiators.

### **ELECTRICS**

240v circuit from landline with RCD.

12v lights throughout protected by fuses.

2 x 12v, engine driven alternators.

1 x 12v, engine start battery.

5 x 12v, 125 amp/hr deep cycle leisure batteries.

3.5kva Travel Pak generator.

Sterling 1800w inverter.

Trickle battery charger.

### **GAS**

1 x 13kg Propane cylinder housed in the stern locker provides gas to the hob.

### **FIRE SAFETY**

3 x 1kg Dry Powder extinguishers

1 x Fire Blanket

### **EXTERIOR FINISH**

The boat was painted using quality coach enamels when built. The hull is protected by black bitumen, 4 anodes and a galvanic isolator.

### **ADDITIONAL ITEMS OF INVENTORY**

The boat comes equipped with a normal cruising inventory including a full set of ropes and fenders. Any additional items not listed must be negotiated separately with the owner.

### **MOORING INFORMATION**

Moorings are available for this boat.

**PLEASE NOTE:** The information contained in this brochure is based on our own inspection and information provided by the owner and is intended as a sales aid only to assist you to decide whether you would like to move to the next stage and view the boat for yourself. Measurements can only be taken as approximate. Nothing contained herein constitutes a contract or offer. This is not a survey. We always recommend that a full survey is carried out prior to purchase.