

01270 760 799

Web Site: [www.boatfinderbrokerage.co.uk](http://www.boatfinderbrokerage.co.uk)

E-mail: [sales@boatfinderbrokerage.co.uk](mailto:sales@boatfinderbrokerage.co.uk)



## BOATFINDER BROKERAGE

Nationwide brokers of quality canal boats

MIDDLEWICH CANAL CENTRE

Kings Lock Boatyard  
Booth Lane  
Middlewich  
Cheshire  
CW10 0JJ



**REF: 120351**

**£69,995**

- Stylish 10/6/5/4 mm steelwork by Severn Valley Boat Centre with side doors and a semi-trad stern. Cratch and cover to the bow and a Pram cover to semi-trad deck.
- Barrus Shire 45hp, diesel engine coupled to a PRM 150 D2 hydraulic gearbox.
- Beautiful fit-out by Severn Valley Boat Centre in light oak faced ply offering up to 5 berth accommodation.
- Stainless steel water tank.
- Spray foam insulation.
- Sterling Power Products 1.8kw inverter.
- Sterling battery charger.
- Dometic Travel Power 3.5kw generator
- Eberspacher diesel fired central heating (new in 2021) and a Bubble diesel fired stove.



## **BROKER'S SUMMARY**

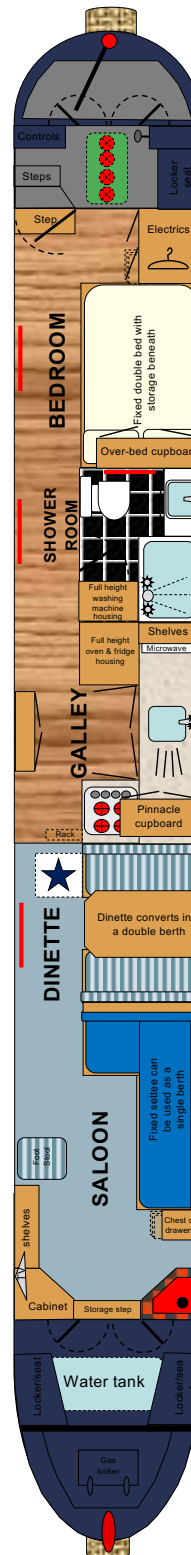
**58ft Semi-Trad stern narrow boat.** Stylish 10/6/5/4/mm steelwork by Severn Valley Boat Centre with side doors and a semi-trad stern. Cratch and cover to the bow and a Pram cover to semi-trad deck. Beautiful fit-out by Severn Valley Boat Centre in light oak faced ply with solid light oak trims offering up to 5 berth accommodation. Powered by a Barrus Shire 45hp, 4 cylinder diesel engine coupled to a PRM 150 D2 hydraulic gearbox.

Oulton Belle is a lovely 2006 two owner live-aboard spec semi-trad narrowboat from Severn Valley Boat Centre offering up to 5 berth accommodation. She would be equally suited for live-aboard or holiday use. She was blacked in Aug 2021. Viewing is highly recommended. Mooring available by separate negotiation..

BSSC to November 2026.

# LAYOUT DIAGRAM

(not to scale)







## FROM THE BOW

From the bow which holds the gas locker, there is a 4' self draining well deck with locker/seats to either side. There is a wooden cratch frame with windows to the front and a vinyl cover with clear panels. The stainless steel water tank is located beneath the well deck with a surface mounted filler.

## GENERIC FIXTURES AND FITTINGS

The ceilings, cabin sides and hull sides are lined with light oak faced plywood panels trimmed with solid light oak. All interior wood has been varnished. There are blinds to all windows. Flooring throughout is wood laminate throughout, apart from the saloon which has carpet and the bathroom which has tile effect laminate.

### SALOON 12' 10"

Hardwood, ½ glazed front doors, open out onto the front deck with a storage step down into the saloon.

**Fixed Furniture:** 1 x low level corner cabinet. 1 x low level bookcase. "L" shaped fixed settee which can be used as a single berth and has storage space in the base. Chest of drawers.

**Heating:** Diesel fired Bubble stove set on a tiled hearth and surround.

**Power:** 6 x 240v sockets. 1 x TV aerial.

**Other Features:** 22" JVC TV with built in DVD player. JVC radio/CD player.



**Lighting:** 2 x windows with top hopper opening vents. 4 x 12v, ceiling lights. 4 x 12v, LED wall lights.



## DINETTE 6' 4"

**Fixed Furniture:** Pullman style dinette with padded bench seats with storage space and pull out 12v Shoreline cool box beneath. The dinette converts into a double berth.

**Loose Furniture:** Oak table top with desmo legs.

**Heating:** 1 x central heating radiator.



**Lighting:** 2 x windows with top hopper opening vents. 2 x 12v, ceiling lights. 2 x 12v, LED wall lights.

**Power:** 2 x 240v sockets.





## GALLEY 6' 11"



The "U" shaped galley has custom built units in oak with Shaker style doors. Worktops are moulded Corian with matching splash-backs.

**Base units:** 2 x cupboards that extend into the corners. Full height oven and fridge housing with cupboard above. Pull-out rack. 4 x drawer unit. 1 x slim-line double cupboard

**Wall Units:** Glazed double Pinnacle cupboard. Wall mounted shelves.

**Appliances:** Spinflo Midi Prima built in eye level gas oven with separate oven and grill. Spinflo inset four burner gas hob with glazed lid/splash-back. 12v, Shoreline fridge. Sharp 800w microwave. Moulded Corian sink and integral drainer with chrome monobloc tap.



**Lighting:** 1 x window with top hopper opening vent. 1 x set of steel side doors, wood lined internally. 2 x 12v, ceiling lights. 2 x 12v, LED under cupboard lights.

**Power:** 4 x 240v sockets.



## **SHOWER ROOM 6' x 4'**

The cabin shower room has full height ceramic tiling with a white suite comprising:

**Suite:** Shower cubicle with a mixer shower, feature LED lights and a shower curtain. Vanity unit with counter top ceramic wash basin, chrome mixer tap and a cupboard beneath. Thetford cassette toilet with two spare cassettes.



**Other Features:** Full height cupboard housing the Zanussi washing machine.

**Lighting:** 1 x porthole with top hopper opening vent and privacy glass. 2 x 12v, ceiling lights. 5 x 12v, LED feature wall lights.

**Heating:** 1 x chrome towel rail.

**Power:** 1 x shaver point.



**Corridor Heating:** 1 x central heating radiator.

**Corridor Lighting:** 1 x porthole with top hopper opening vent. 1 x 12v, ceiling light.





## BEDROOM 9' 8"



**Furniture:** Fixed double bed with storage drawers below. Full height wardrobe with 3 drawers below. 1 x double over-bed cupboard. 1 x electrics cupboard. Rear storage step.

**Heating:** 1 x central heating radiator.

**Lighting:** 2 x portholes with top hopper opening vents. 2 x 12v, ceiling lights. 2 x 12v, led reading lights.

**Power:** 1 x 240v socket. 1 x TV aerial point.





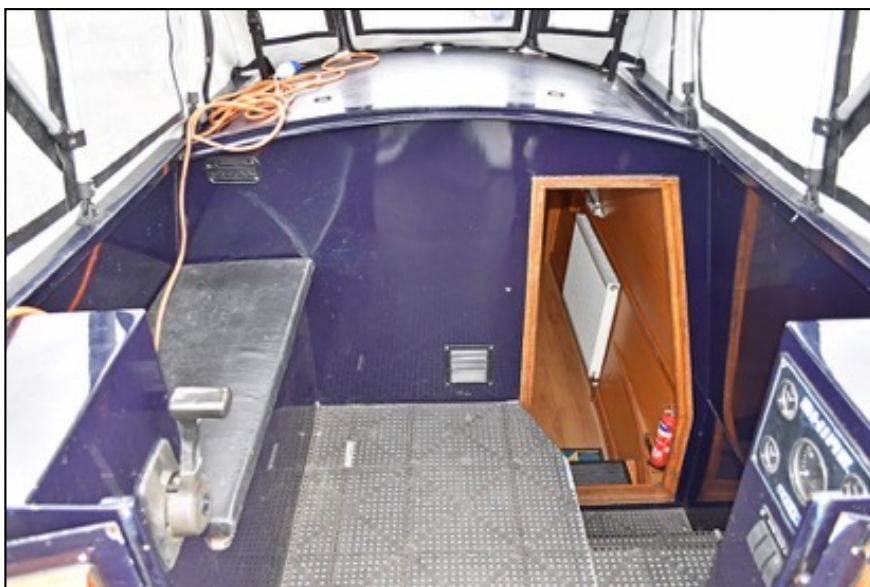
## SEMI-TRAD DECK 4' 5" & STERN 3' 6"



Hardwood rear door leads from the bedroom to the semi-trad deck where the engine is housed under the lift up floor panels. There is a steel locker/seat to the port side. Steel stern doors, wood lined internally lead to the rear deck and steering position.

**Other Features:** Pram cover.

**Controls:** The single lever engine control is on the port side just inside the stern doors.



## SPECIFICATIONS

### **BUILDER**

Quality steelwork with a semi-trad stern and an oak fit-out by Severn Valley Boat Centre.

### **BUILD DETAILS**

Built in 2006  
Semi-trad stern.  
10/6/5/4/mm

### **INSULATION**

Spray foam insulation behind the cabin linings.

### **BALLAST**

Concrete blocks beneath the floorboards.

### **DIMENSIONS**

Overall Length:	58'
Cabin Length:	41' 11"
Width:	6' 10"
Interior Headroom:	6' 4"
Well Deck:	4'
Draught	2'

### **WINDOWS, DOORS & HATCHES**

**Port side:** 3 x windows with top hopper opening vents. 2 x portholes with top hopper opening vents.

**Starboard side:** 2 x windows with top hopper opening vents. 2 x portholes with top hopper opening vents. 1 x set of steel side doors, wood lined internally.

**Front:** Hardwood, ½ glazed front doors.

**Rear:** Hardwood rear door. Steel stern doors, wood lined internally.

### **ENGINE & TRANSMISSION**

The boat is powered by a Barrus Shire 45hp, 4 cylinder, marine diesel engine coupled to a PRM 150 D2 hydraulic gearbox with 2:1 reduction, turning the propeller. The exhaust is lagged, silenced and vents out from under the side deck.

The engine powers twin 12v alternators to charge the start battery and the 4 leisure batteries.

### **WATER**

The 675 litre stainless steel water tank is located beneath the well deck. Water pump with pressure switch is located adjacent to the tank. Twin coil calorifier is heated by the Eberspacher diesel fired boiler and/or the engine heat exchanger.

### **HEATING**

Heating is provided by the Bubble diesel fired stove and the Eberspacher diesel fired boiler running 4 radiators.

### **ELECTRICS**

240v circuit from landline with RCD.  
12v lights throughout protected by fuses.  
2 x 12v, 110/50 amp/hr engine driven alternators.  
1 x 12v, 50 amp/hr engine start battery.  
4 x 12v, 110 amp/hr deep cycle leisure batteries.  
3.5kw Dometic Travel Power generator.  
Sterling Power Products 1.8kw inverter.  
Sterling battery charger.

### **GAS**

2 x 11kg Propane cylinders housed in the bow locker, provide gas to the oven grill and hob.

### **FIRE SAFETY**

3 x 1kg Dry Powder extinguishers  
1 x Fire Blanket  
3 x Carbon Monoxide Detectors.  
1 x Smoke Alarm.

### **EXTERIOR FINISH**

The boat was professionally painted approximately 8 years ago. The boat was last docked for blacking in August 2020. The hull is protected by 4 anodes and a galvanic isolator.

### **ADDITIONAL ITEMS OF INVENTORY**

The boat comes equipped with a normal cruising inventory including a full set of ropes and fenders. Any additional items not listed must be negotiated separately with the owner.

### **MOORING INFORMATION**

Moorings available by separate negotiation.

**PLEASE NOTE:** The information contained in this brochure is based on our own inspection and information provided by the owner and is intended as a sales aid only to assist you to decide whether you would like to move to the next stage and view the boat for yourself. Measurements can only be taken as approximate. Nothing contained herein constitutes a contract or offer. This is not a survey. We always recommend that a full survey is carried out prior to purchase.