

01270 760 799

Web Site: [www.boatfinderbrokerage.co.uk](http://www.boatfinderbrokerage.co.uk)

E-mail: [sales@boatfinderbrokerage.co.uk](mailto:sales@boatfinderbrokerage.co.uk)



**BOATFINDER  
BROKERAGE**

Nationwide brokers of quality canal boats

MIDDLEWICH CANAL CENTRE

Kings Lock Boatyard  
Booth Lane  
Middlewich  
Cheshire  
CW10 0JJ



**REF: 120240**

**£24, 995**

- Quality steelwork by Gilbert Brothers of Coventry with a trad stern.
- BMC 1.5 litre, 4 cylinder marine diesel engine with a Newage gearbox.
- High quality fit-out in pine and painted T&G with painted panels and trims offering 5 berth accommodation.
- Stainless steel water tank.
- Studer AJ800 2 kW inverter.
- Waeco Perfect Charge IV15R battery charger panels.
- Solid fuel stove.
- Mooring available by separate negotiation.



## **BROKER'S SUMMARY**

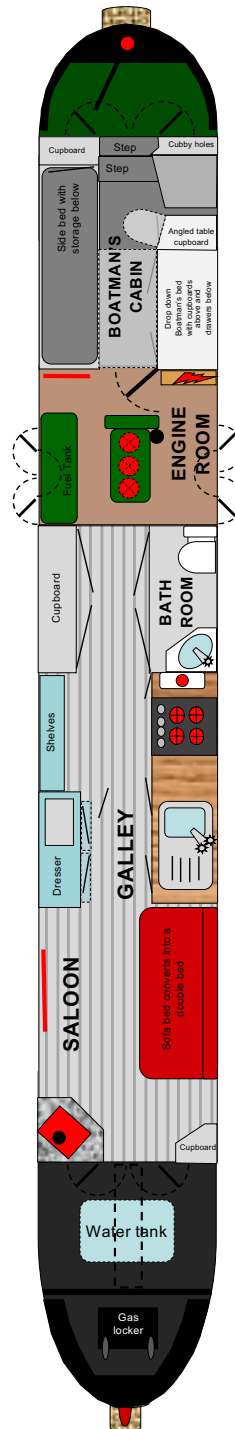
**47ft Trad stern narrow boat.** Quality steelwork with a trad stern. High quality fit-out in a mix of pine and painted T&G to the ceiling and cabin sides in the saloon and galley with painted panels and trims in the engine room and Boatman's cabin. 5 berth accommodation. Powered by a BMC 1.5 litre, 4 cylinder marine diesel engine with Newage gearbox.

Jenny Wren is a compact 47ft narrow boat with a boatman's cabin and engine room. She has been maintained with care and subject to an extensive repair programme by the current owner (which includes new chimney and stove pipe, new flooring, engine service and new alternator, refreshed bathroom area and new sofa bed). She was last out of the water for blacking in July 2020. Viewing recommended. Mooring available by separate negotiation.

BSSC to July 2024.

# LAYOUT DIAGRAM

(not to scale)





## FROM THE BOW

From the bow which holds the gas locker, there is a 5' 4" open self draining well deck. There is a storage chest to the front of the well deck. The stainless steel water tank is located beneath the well deck with a surface mounted filler. There is a wooden cratch frame with window to the front with a cover.

## GENERIC FIXTURES AND FITTINGS

The ceilings are lined with a mix of painted T&G painted panels and trims. Cabin sides are lined with pine T&G and painted panels. Hull sides are lined with carpet, T&G and painted panels. All interior wood has been varnished or painted. There are blinds to all windows. Flooring is wood effect laminate apart from the bathroom which has vinyl and the Boatman's cabin which has wooden planks.

## SALOON 7' 5"

Steel stable style front doors, wood lined internally open out onto the well deck with removable steps down into the saloon.

**Fixed Furniture:** 1 x corner cabinet.

**Loose Furniture:** 1 x new sofa bed that converts into a double bed.

**Heating:** Boatman solid fuel stove set on a tiled hearth and surround. 1 x central heating radiator

**Lighting:** 2 x windows with top hopper openings. 2 x 12v, ceiling lights. 2 x 12v, wall lights





## GALLEY 6' 8"

The walk through galley has custom built wooden units with painted Shaker style wooden doors. Worktops are wood effect laminate with ceramic tiled splash-backs.

**Base units:** 1 x double cupboard beneath the sink. 1 x single cupboards. Cooker space. Fridge housing.

**Loose Furniture:** 1 x painted wooden dresser with separate shelf unit.



**Appliances:** Thetford Spinflo slot in domestic sized gas cooker. 240v, fridge with icebox. Paloma gas fired instant water heater. Inset, stainless steel sink with drainer. Chrome monobloc tap.

**Lighting:** 4 x windows with top openings. 2 x 12v, ceiling lights.

**Power:** 4 x 240v sockets with 4 USB chargers.



## BATHROOM 2' 9" x 3'



The compact bathroom has a white suite comprising:

**Suite:** Wall mounted ceramic wash basin with monobloc tap. Thetford Porta-Potti toilet.

**Lighting:** 1 x fixed brass porthole. 1 x 12v, ceiling light.



## ENGINE ROOM

The traditional style engine room houses the BMC 1.5 litre engine. All the other usual hardware for the running of the boat is also housed in this area.

**Lighting:** 2 x sets of steel side doors, wood lined internally. 1 x pigeon box. 2 x fixed brass portholes. 1 x 12v, LED ceiling light.

**Power:** 1 x 240v socket.

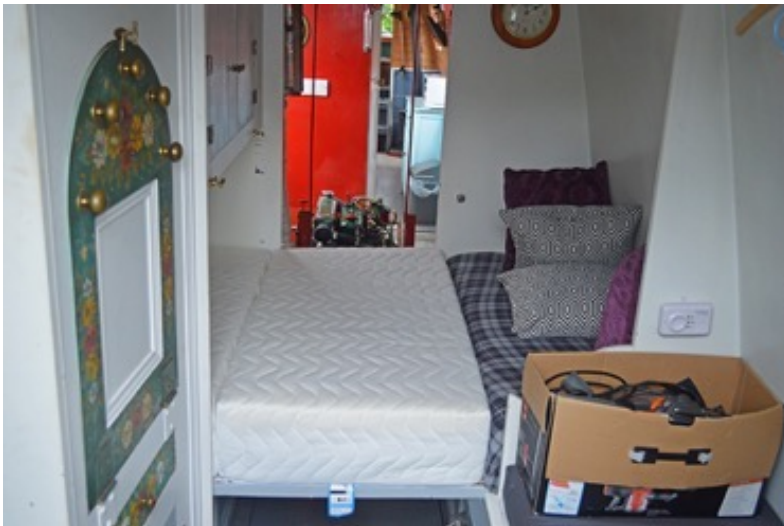
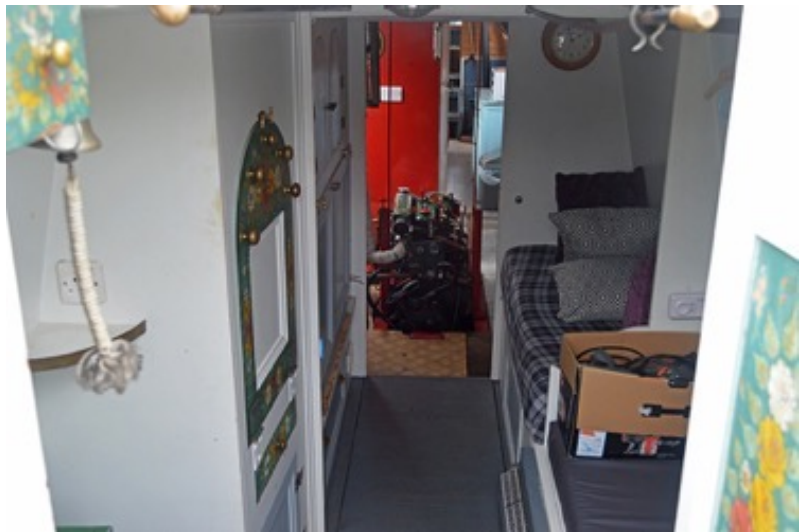




## BOATMAN'S CABIN 10'

Aft of the engine room is the traditional style boatman's cabin with traditional Rose's and Castles painted panels.

**Fixed Furniture:** Drop down Boatman's bed with cupboards above and drawers below. Side bed with storage space underneath. Angled table cupboard with drop down door/table and a cupboard below. 1 x small cupboard on the aft bulkhead. Cubby holes to the aft bulkhead.



**Lighting:** 1 x fixed brass porthole. 2 x 12v, LED ceiling lights.

**Power:** 2 x 240v sockets.





## STERN 3' 3"



Steel rear doors and sliding roof hatch, wood panelled internally lead and traditionally decorated lead to the rear deck and steering position.

**Controls:** The engine controls are traditional push pull levers.



## SPECIFICATIONS

### **BUILDER**

Quality steelwork by Gilbert Brothers of Coventry with a trad stern. High quality fit-out by builder and previous owner offering 5 berth accommodation.

### **BUILD DETAILS**

Built in 1980s  
Trad stern.  
Steel thickness not stated

### **INSULATION**

Rockwool insulation behind the cabin linings.

### **BALLAST**

Concrete blocks beneath the floorboards.

### **DIMENSIONS**

Overall Length:	47'
Cabin Length:	32' 6"
Width:	6' 10"
Interior Headroom:	6' 1"
Well Deck:	5'
Draught	2'

### **WINDOWS, DOORS & HATCHES**

**Port side:** 1 x fixed porthole. 3 x windows with top hopper openings. 1 x set of steel side doors, wood lined internally.

**Starboard side:** 2 x fixed portholes. 3 x windows with top hopper openings. 1 x set of steel side doors, wood lined internally.

**Front:** Steel ½ glazed front doors, wood lined internally.

**Rear:** Steel rear doors wood lined internally, with sliding roof hatch.

### **ENGINE & TRANSMISSION**

The boat is powered by a BMC 1.5 litre 4 cylinder, marine diesel engine coupled to a Newage gearbox with 2:1 reduction, turning the propeller. The exhaust is lagged, silenced and vents out from under the side deck.

The engine powers a 12v alternator to charge the start battery and the 2 leisure batteries.

### **WATER**

The large stainless steel water tank is located below the well deck. Water pump with pressure switch is located adjacent to the tank. Water is heated by the Paloma gas fired water heater in the galley.

### **HEATING**

Heating is provided by the Boatman solid fuel stove in the saloon and the Eberspacher diesel fired boiler running 1 radiators, 1 towel rail and 1 fin rad.

### **ELECTRICS**

240v circuit from landline with RCD.  
12v lights throughout protected by fuses.  
1 x 12v, engine driven alternator.  
2 x 12v, engine start batteries.  
2 x 12v, deep cycle leisure battery.  
Studer AJ800 2 kW inverter.  
Waeco Perfect Charge IV15R battery charger.

### **GAS**

2 x Propane cylinders housed in the bow locker, provide gas to the water heater and the slot in cooker.

### **FIRE SAFETY**

2 x Dry Powder extinguishers  
1 x Fire Blanket  
1 x Carbon Monoxide Detector.

### **EXTERIOR FINISH**

The boat was professionally painted when built. The boat was last docked for blacking in July 2020. The hull is protected by 12 anodes and a galvanic isolator.

### **ADDITIONAL ITEMS OF INVENTORY**

The boat comes equipped with a normal cruising inventory including a full set of ropes and fenders. Any additional items not listed must be negotiated separately with the owner.

### **MOORING INFORMATION**

Current moorings available by separate negotiation.

**PLEASE NOTE:** The information contained in this brochure is based on our own inspection and information provided by the owner and is intended as a sales aid only to assist you to decide whether you would like to move to the next stage and view the boat for yourself. Measurements can only be taken as approximate. Nothing contained herein constitutes a contract or offer. This is not a survey. We always recommend that a full survey is carried out prior to purchase.

© Copyright Boat Finder Brokerage Services