




# Boat Finder Brokerage Services

*Brokers of Fine Quality Inland Waterways Craft*

 : 01270 760799

 : 07732 366185

 : sales@boatfinderbrokerage.co.uk

 : www.boatfinderbrokerage.co.uk

Office address: Edwin Foden Business Centre, Moss Lan, Sandbach, Cheshire CW11 3AE



**REF: BN001**

**£99,995**

- High quality steelwork by Elton Moss Boatbuilders with Trad, Semi-Trad or Cruiser stern.
- 42hp Isuzu marine diesel engine with PRM 150 hydraulic gearbox.
- Modern stylish fit-out in Oak offering luxurious 6 berth accommodation.
- Engine driven generator.

- Electric Bow-thruster.
- Powermaster 1800w inverter.
- Spray foam insulation.
- Stainless steel water tank.
- Diesel fired central heating & S/F stove.
- Washer/dryer and dishwasher.

*Boat Finder Brokerage Services is a trading name of Boatfinder Brokerage Services Ltd. Reg'd No. 4923033  
Reg'd Address: Edwin Foden Business Centre, Moss Lane, Sandbach, Cheshire CW11 3JW*



**REF: BN001**

## **BROKER'S SUMMARY**

**58ft New Trad, Semi-Trad OR Cruiser style narrow boat.** High quality steelwork with side doors and superb paint finish by Elton Moss Boatbuilders. Stylish modern fit-out in Oak, offering luxurious 6 berth accommodation. Powered by a Isuzu 42hp, 4 cylinder marine diesel engine.

This boat is fully laden with high quality equipment and materials from the engine and bow-thruster through to its granite worktops and tongue and groove lining.

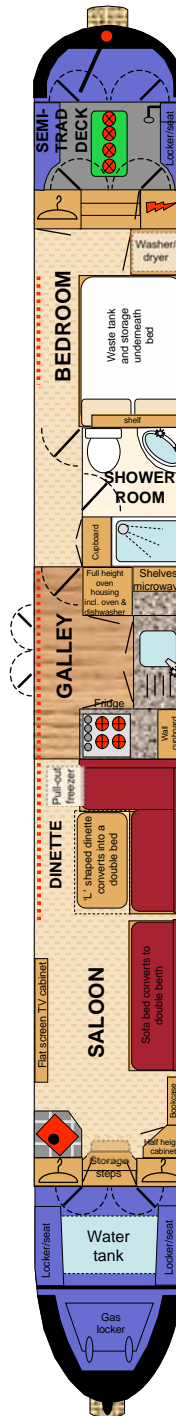
The builder is a highly reputable builder of bespoke boats and can therefore also build to your own specification.

This brochure provides an example specification for a previously completed boat, to provide an idea of the type of boat that can be built and the associated costs. A new boat can be built to this exact specification or changes can be made to create a truly bespoke boat (costs will vary depending on your requirements).

**NEW RECREATIONAL CRAFT DIRECTIVE CERTIFICATE OF CONFORMITY**

# LAYOUT DIAGRAM

(not to scale)





## **FROM THE BOW**

From the bow which holds the gas locker, there is a 4' self draining open well deck with locker/seats to either side. The bow thruster and the stainless steel water tank are located beneath the well deck with a surface mounted filler. The headlamp is mounted on the front of the roof.

## **GENERIC FIXTURES AND FITTINGS**

The ceilings are lined with 6mm Oak faced plywood with solid Oak trim. Hull sides are lined with 9mm Oak faced plywood with solid Oak trim. Cabin sides to the saloon and galley are lined with solid Oak tongue and groove laid diagonally, the rest of the cabin sides are lined with 9mm Oak faced plywood, all trimmed with solid Oak. All the interior wood has been varnished to a gloss finish.

## **LOUNGE 10' 9"**



Steel, half glazed front doors, Oak panelled internally open out onto the front deck with lit storage steps down into the saloon.

**Fixed Furniture:** 2 x full height wardrobes. 1 x half height corner cupboard. 1 x bookcase. TV cabinet with flat screen TV, DVD player and radio/CD player with speakers throughout the boat. Fitted sofa bed with high quality padded and upholstered cushions, that converts into a double berth.

**Heating:** Valour Willow, cast iron solid fuel stove set on a raised ceramic tiled hearth and surround.

**Lighting:** 2 x large opening and removable windows, 4 x 12v, recessed halogen down-lights. 1 x 12v, recessed halogen light in the front step.

**Power:** 4 x 240v sockets.

**Flooring:** Carpet.





## **DINETTE 6' 9"**

'L' shaped dinette with sloping backs for added comfort and high quality padded and upholstered cushions. Oak table top with folding legs. The dinette converts into a double bed and has storage space beneath the seats.

**Other Features:** Pull-out chest freezer housed beneath the dinette.

**Heating:** Skirting radiator.

**Lighting:** 2 x large opening or removable windows. 4 x 12v, recessed halogen down-lights. 3 x 12v, wall lights.

**Flooring:** Carpet.

## **GALLEY 8'**

The galley has custom built units with Oak framed door and drawer fronts. Worktops are solid Granite with ceramic tiled splash-backs.

**Base units:** 1 x double cupboard that extends into the corners and has a drawer above. Full height oven housing with cupboards above and below. Fridge housing with matching door. Built-in wine rack.

**Wall Units:** 1 x glazed wall cabinet. 2 x wall mounted shelves.



**Appliances:** Belling, stainless steel eye-level oven and grill. Belling, stainless steel, inset four burner gas hob. Shoreline electric fridge. Shoreline, electric freezer. Domestic sized washer/dryer of choice. Beko dishwasher. Microwave. Stainless steel, under-slung sink with chrome monobloc tap.

**Heating:** Skirting radiator.

**Lighting:** 1 x large window. 1 x set of steel side doors, Oak panelled internally. 4 x 12v, recessed halogen down-lights.

**Power:** 4 x 240 sockets.

**Flooring:** Solid Oak.

## **BATHROOM 6' x 4'**



The cabin shower room has a white suite comprising:

**Suite:** Shower enclosure with chrome mixer taps, shower attachment and glazed doors. Corner vanity unit with large inset porcelain wash basin, chrome mixer tap and a cupboard beneath. Macerator pump-out toilet with remote holding tank. Full height cupboard accessed from the corridor. Large wall mounted mirror.

**Power:** 1 x shaver point.

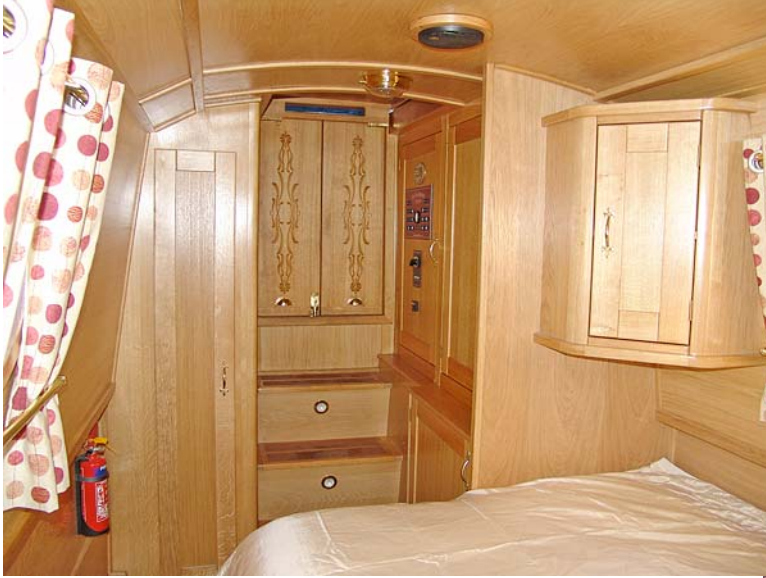
**Heating:** 1 x rail radiator.

**Flooring:** Marble effect vinyl flooring.



**Lighting:** 1 x porthole with opening and privacy glass and a further porthole in the corridor. 1 x 12v, ceiling mounted, round light. 1 x 12v, shower light. 1 x 12v shaver light. 1 x 12v, light with extractor fan.

### **BEDROOM 11' (including rear steps)**



**Furniture:** 4'6" domestic sized fixed double bed with storage space and waste tank underneath. 1 x full height wardrobe. Cupboard housing the washer/dryer with shelves above. Electric cupboard. Large wall mounted corner cupboard. Wall mounted shelf above the bed. Rear storage steps.



**Heating:** Skirting radiator.

**Lighting:** 2 x portholes with opening or removable. 1 x 12v, ceiling mounted, round light. 2 x 12v, recessed halogen down-lights. 2 x 12v, reading lights mounted above the bed. 2 x 12v, recessed halogen lights in the rear steps.

**Power:** 2 x 240v socket.

**Flooring:** Carpet.

### **SEMI-TRAD DECK 4' & STERN 3'**

Steel rear doors Oak panelled internally with sliding roof hatch lead onto the semi-trad deck where there are access panels to the engine and batteries. There are steel locker/seats to either side of the semi-trad deck. Steel stern doors lead to the rear deck and steering position.

**Controls:** The single lever engine control is mounted just inside the stern doors on the starboard.

**Flooring:** Marine ply boards with anti-slip deck tread.



## SPECIFICATIONS

### **BUILDER**

High quality steelwork with beautiful Oak fit-out by Elton Moss Boatbuilders.

### **BUILD DETAILS**

New  
Trad, Semi-Trad or Cruiser Style  
10mm/6mm/5mm/4mm.

### **INSULATION**

Spray foam forms the insulation behind the cabin linings.

### **BALLAST**

Bricks under floorboards.

### **DIMENSIONS**

Overall Length:	58'
Cabin Length:	46' 6"
Width:	6' 10"
Interior Headroom:	6' 6"
Well Deck:	4'
Draught	1' 10"

### **WINDOWS, DOORS & HATCHES**

**Port:** 2 x brass portholes. 3 x large fully opening windows.

**Starboard:** 2 x brass portholes. 2 x large fully opening windows. 1 x set of steel side doors, wood panelled internally.

**Front:** Steel hatch on bow locker. Steel, half glazed front doors Oak panelled internally.

**Rear:** Steel rear doors and sliding roof hatch, Oak panelled internally. Steel stern doors.

### **ENGINE & TRANSMISSION**

The boat is powered by a Isuzu 42 hp, 4 cylinder water cooled, marine diesel engine, coupled to a PRM 150 hydraulic gearbox turning the propeller. The exhaust is lagged, silenced and vents out under the side deck.

The engine powers twin alternators to charge the start battery and the 4 leisure batteries.

### **BOW-THRUSTER**

Electric Bow-thruster with controls at the stern.

### **GAS**

1 x 13kg Propane cylinder with manual change-over, housed in the bow locker, provides gas to the oven, grill and hob.

### **WATER**

The 200 litre stainless steel water tank is located under the front well deck. Water pump with pressure switch and accumulator is housed in the front wardrobe. The twin coil calorifier is heated by the diesel fired central heating boiler and/or the engine heat exchanger.

### **HEATING**

Heating is provided by the Valour solid fuel stove in the lounge and the Webasto diesel fired boiler running skirting radiators.

### **ELECTRICS**

240v circuit from landline with RCD.  
12v lights throughout protected by fuses.  
2 x 12v, 110/80 amp/hr engine driven alternators.  
1 x 12v, 110 amp/hr engine start battery.  
4 x 12v, 110 amp/hr leisure batteries.  
Engine driven generator.  
1800w Powermaster inverter.  
25 amp Powermaster battery charger.

### **FIRE SAFETY**

3 x Dry Powder extinguishers  
1 x Fire Blankets

### **EXTERIOR FINISH**

The exterior finish in quality coach enamels. The hull is protected by black bitumen and 4 sacrificial anodes.

### **ADDITIONAL ITEMS OF INVENTORY**

The boat comes equipped with the normal cruising inventory including ropes and fenders. Any additional items not listed must be negotiated separately with the builder.


**PLEASE NOTE: The information contained in this brochure is based on our own inspection and information provided by the owner and is intended as a sales aid only to assist you to decide whether you would like to move to the next stage and view the boat for yourself. Measurements can only be taken as approximate. Nothing contained herein constitutes a contract or offer. This is not a survey. We always recommend that a full survey is carried out prior to purchase.**



# Boat Finder Brokerage Services

*Brokers of Fine Quality Inland Waterways Craft*

 : 01270 760799

 : 07732 366185

 : sales@boatfinderbrokerage.co.uk

 : www.boatfinderbrokerage.co.uk

Office address: Edwin Foden Business Centre, Moss Lan, Sandbach, Cheshire CW11 3AE



**REF: BN001**

**£99,995**

- High quality steelwork by Elton Moss Boatbuilders with Trad, Semi-Trad or Cruiser stern.
- 42hp Isuzu marine diesel engine with PRM 150 hydraulic gearbox.
- Modern stylish fit-out in Oak offering luxurious 6 berth accommodation.
- Engine driven generator.

- Electric Bow-thruster.
- Powermaster 1800w inverter.
- Spray foam insulation.
- Stainless steel water tank.
- Diesel fired central heating & S/F stove.
- Washer/dryer and dishwasher.

*Boat Finder Brokerage Services is a trading name of Boatfinder Brokerage Services Ltd. Reg'd No. 4923033  
Reg'd Address: Edwin Foden Business Centre, Moss Lane, Sandbach, Cheshire CW11 3JW*



**REF: BN001**

## **BROKER'S SUMMARY**

**58ft New Trad, Semi-Trad OR Cruiser style narrow boat.** High quality steelwork with side doors and superb paint finish by Elton Moss Boatbuilders. Stylish modern fit-out in Oak, offering luxurious 6 berth accommodation. Powered by a Isuzu 42hp, 4 cylinder marine diesel engine.

This boat is fully laden with high quality equipment and materials from the engine and bow-thruster through to its granite worktops and tongue and groove lining.

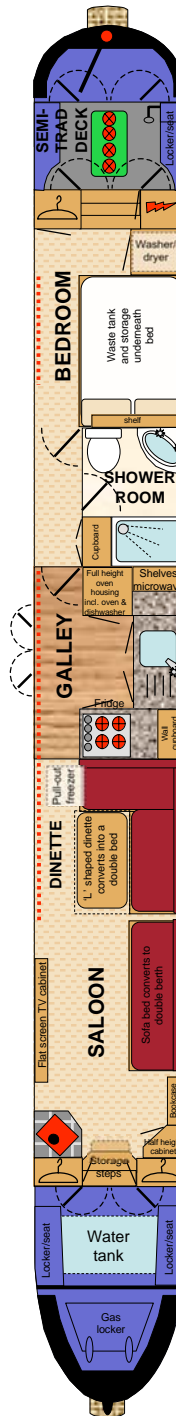
The builder is a highly reputable builder of bespoke boats and can therefore also build to your own specification.

This brochure provides an example specification for a previously completed boat, to provide an idea of the type of boat that can be built and the associated costs. A new boat can be built to this exact specification or changes can be made to create a truly bespoke boat (costs will vary depending on your requirements).

**NEW RECREATIONAL CRAFT DIRECTIVE CERTIFICATE OF CONFORMITY**

# LAYOUT DIAGRAM

(not to scale)





## **FROM THE BOW**

From the bow which holds the gas locker, there is a 4' self draining open well deck with locker/seats to either side. The bow thruster and the stainless steel water tank are located beneath the well deck with a surface mounted filler. The headlamp is mounted on the front of the roof.

## **GENERIC FIXTURES AND FITTINGS**

The ceilings are lined with 6mm Oak faced plywood with solid Oak trim. Hull sides are lined with 9mm Oak faced plywood with solid Oak trim. Cabin sides to the saloon and galley are lined with solid Oak tongue and groove laid diagonally, the rest of the cabin sides are lined with 9mm Oak faced plywood, all trimmed with solid Oak. All the interior wood has been varnished to a gloss finish.

## **LOUNGE 10' 9"**



Steel, half glazed front doors, Oak panelled internally open out onto the front deck with lit storage steps down into the saloon.

**Fixed Furniture:** 2 x full height wardrobes. 1 x half height corner cupboard. 1 x bookcase. TV cabinet with flat screen TV, DVD player and radio/CD player with speakers throughout the boat. Fitted sofa bed with high quality padded and upholstered cushions, that converts into a double berth.

**Heating:** Valour Willow, cast iron solid fuel stove set on a raised ceramic tiled hearth and surround.

**Lighting:** 2 x large opening and removable windows, 4 x 12v, recessed halogen down-lights. 1 x 12v, recessed halogen light in the front step.

**Power:** 4 x 240v sockets.

**Flooring:** Carpet.





## **DINETTE 6' 9"**

'L' shaped dinette with sloping backs for added comfort and high quality padded and upholstered cushions. Oak table top with folding legs. The dinette converts into a double bed and has storage space beneath the seats.

**Other Features:** Pull-out chest freezer housed beneath the dinette.

**Heating:** Skirting radiator.

**Lighting:** 2 x large opening or removable windows. 4 x 12v, recessed halogen down-lights. 3 x 12v, wall lights.

**Flooring:** Carpet.

## **GALLEY 8'**

The galley has custom built units with Oak framed door and drawer fronts. Worktops are solid Granite with ceramic tiled splash-backs.

**Base units:** 1 x double cupboard that extends into the corners and has a drawer above. Full height oven housing with cupboards above and below. Fridge housing with matching door. Built-in wine rack.

**Wall Units:** 1 x glazed wall cabinet. 2 x wall mounted shelves.



**Appliances:** Belling, stainless steel eye-level oven and grill. Belling, stainless steel, inset four burner gas hob. Shoreline electric fridge. Shoreline, electric freezer. Domestic sized washer/dryer of choice. Beko dishwasher. Microwave. Stainless steel, under-slung sink with chrome monobloc tap.

**Heating:** Skirting radiator.

**Lighting:** 1 x large window. 1 x set of steel side doors, Oak panelled internally. 4 x 12v, recessed halogen down-lights.

**Power:** 4 x 240 sockets.

**Flooring:** Solid Oak.

## **BATHROOM 6' x 4'**



The cabin shower room has a white suite comprising:

**Suite:** Shower enclosure with chrome mixer taps, shower attachment and glazed doors. Corner vanity unit with large inset porcelain wash basin, chrome mixer tap and a cupboard beneath. Macerator pump-out toilet with remote holding tank. Full height cupboard accessed from the corridor. Large wall mounted mirror.

**Power:** 1 x shaver point.

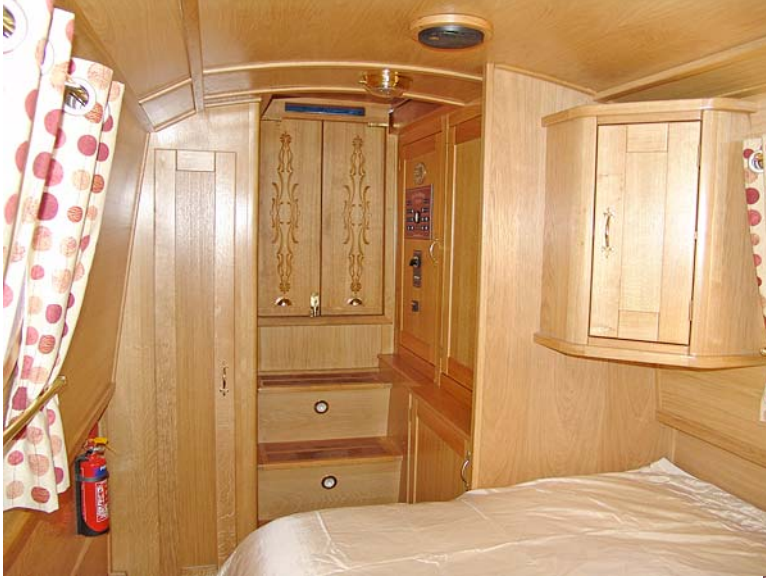
**Heating:** 1 x rail radiator.

**Flooring:** Marble effect vinyl flooring.



**Lighting:** 1 x porthole with opening and privacy glass and a further porthole in the corridor. 1 x 12v, ceiling mounted, round light. 1 x 12v, shower light. 1 x 12v shaver light. 1 x 12v, light with extractor fan.

### **BEDROOM 11' (including rear steps)**



**Furniture:** 4'6" domestic sized fixed double bed with storage space and waste tank underneath. 1 x full height wardrobe. Cupboard housing the washer/dryer with shelves above. Electric cupboard. Large wall mounted corner cupboard. Wall mounted shelf above the bed. Rear storage steps.



**Heating:** Skirting radiator.

**Lighting:** 2 x portholes with opening or removable. 1 x 12v, ceiling mounted, round light. 2 x 12v, recessed halogen down-lights. 2 x 12v, reading lights mounted above the bed. 2 x 12v, recessed halogen lights in the rear steps.

**Power:** 2 x 240v socket.

**Flooring:** Carpet.

### **SEMI-TRAD DECK 4' & STERN 3'**

Steel rear doors Oak panelled internally with sliding roof hatch lead onto the semi-trad deck where there are access panels to the engine and batteries. There are steel locker/seats to either side of the semi-trad deck. Steel stern doors lead to the rear deck and steering position.

**Controls:** The single lever engine control is mounted just inside the stern doors on the starboard.

**Flooring:** Marine ply boards with anti-slip deck tread.



## SPECIFICATIONS

### **BUILDER**

High quality steelwork with beautiful Oak fit-out by Elton Moss Boatbuilders.

### **BUILD DETAILS**

New  
Trad, Semi-Trad or Cruiser Style  
10mm/6mm/5mm/4mm.

### **INSULATION**

Spray foam forms the insulation behind the cabin linings.

### **BALLAST**

Bricks under floorboards.

### **DIMENSIONS**

Overall Length:	58'
Cabin Length:	46' 6"
Width:	6' 10"
Interior Headroom:	6' 6"
Well Deck:	4'
Draught	1' 10"

### **WINDOWS, DOORS & HATCHES**

**Port:** 2 x brass portholes. 3 x large fully opening windows.

**Starboard:** 2 x brass portholes. 2 x large fully opening windows. 1 x set of steel side doors, wood panelled internally.

**Front:** Steel hatch on bow locker. Steel, half glazed front doors Oak panelled internally.

**Rear:** Steel rear doors and sliding roof hatch, Oak panelled internally. Steel stern doors.

### **ENGINE & TRANSMISSION**

The boat is powered by a Isuzu 42 hp, 4 cylinder water cooled, marine diesel engine, coupled to a PRM 150 hydraulic gearbox turning the propeller. The exhaust is lagged, silenced and vents out under the side deck.

The engine powers twin alternators to charge the start battery and the 4 leisure batteries.

### **BOW-THRUSTER**

Electric Bow-thruster with controls at the stern.

### **GAS**

1 x 13kg Propane cylinder with manual change-over, housed in the bow locker, provides gas to the oven, grill and hob.

### **WATER**

The 200 litre stainless steel water tank is located under the front well deck. Water pump with pressure switch and accumulator is housed in the front wardrobe. The twin coil calorifier is heated by the diesel fired central heating boiler and/or the engine heat exchanger.

### **HEATING**

Heating is provided by the Valour solid fuel stove in the lounge and the Webasto diesel fired boiler running skirting radiators.

### **ELECTRICS**

240v circuit from landline with RCD.  
12v lights throughout protected by fuses.  
2 x 12v, 110/80 amp/hr engine driven alternators.  
1 x 12v, 110 amp/hr engine start battery.  
4 x 12v, 110 amp/hr leisure batteries.  
Engine driven generator.  
1800w Powermaster inverter.  
25 amp Powermaster battery charger.

### **FIRE SAFETY**

3 x Dry Powder extinguishers  
1 x Fire Blankets

### **EXTERIOR FINISH**

The exterior finish in quality coach enamels. The hull is protected by black bitumen and 4 sacrificial anodes.

### **ADDITIONAL ITEMS OF INVENTORY**

The boat comes equipped with the normal cruising inventory including ropes and fenders. Any additional items not listed must be negotiated separately with the builder.

**PLEASE NOTE:** *The information contained in this brochure is based on our own inspection and information provided by the owner and is intended as a sales aid only to assist you to decide whether you would like to move to the next stage and view the boat for yourself. Measurements can only be taken as approximate. Nothing contained herein constitutes a contract or offer. This is not a survey. We always recommend that a full survey is carried out prior to purchase.*



# Boat Finder Brokerage Services

*Brokers of Fine Quality Inland Waterways Craft*

 : 01270 760799

 : 07732 366185

 : sales@boatfinderbrokerage.co.uk

 : www.boatfinderbrokerage.co.uk

Office address: Edwin Foden Business Centre, Moss Lan, Sandbach, Cheshire CW11 3AE



**REF: BN001**

**£99,995**

- High quality steelwork by Elton Moss Boatbuilders with Trad, Semi-Trad or Cruiser stern.
- 42hp Isuzu marine diesel engine with PRM 150 hydraulic gearbox.
- Modern stylish fit-out in Oak offering luxurious 6 berth accommodation.
- Engine driven generator.

- Electric Bow-thruster.
- Powermaster 1800w inverter.
- Spray foam insulation.
- Stainless steel water tank.
- Diesel fired central heating & S/F stove.
- Washer/dryer and dishwasher.

*Boat Finder Brokerage Services is a trading name of Boatfinder Brokerage Services Ltd. Reg'd No. 4923033  
Reg'd Address: Edwin Foden Business Centre, Moss Lane, Sandbach, Cheshire CW11 3JW*



**REF: BN001**

## **BROKER'S SUMMARY**

**58ft New Trad, Semi-Trad OR Cruiser style narrow boat.** High quality steelwork with side doors and superb paint finish by Elton Moss Boatbuilders. Stylish modern fit-out in Oak, offering luxurious 6 berth accommodation. Powered by a Isuzu 42hp, 4 cylinder marine diesel engine.

This boat is fully laden with high quality equipment and materials from the engine and bow-thruster through to its granite worktops and tongue and groove lining.

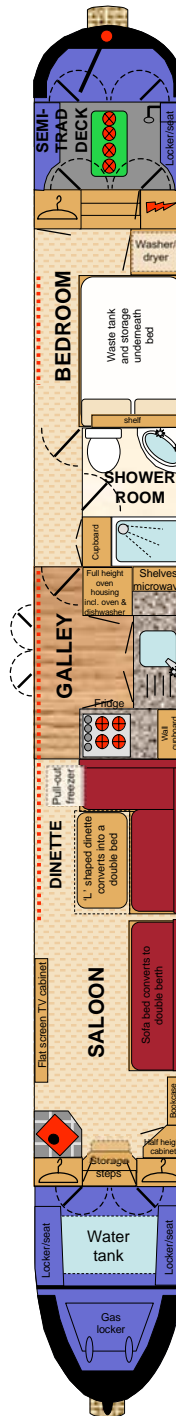
The builder is a highly reputable builder of bespoke boats and can therefore also build to your own specification.

This brochure provides an example specification for a previously completed boat, to provide an idea of the type of boat that can be built and the associated costs. A new boat can be built to this exact specification or changes can be made to create a truly bespoke boat (costs will vary depending on your requirements).

**NEW RECREATIONAL CRAFT DIRECTIVE CERTIFICATE OF CONFORMITY**

# LAYOUT DIAGRAM

(not to scale)





## **FROM THE BOW**

From the bow which holds the gas locker, there is a 4' self draining open well deck with locker/seats to either side. The bow thruster and the stainless steel water tank are located beneath the well deck with a surface mounted filler. The headlamp is mounted on the front of the roof.

## **GENERIC FIXTURES AND FITTINGS**

The ceilings are lined with 6mm Oak faced plywood with solid Oak trim. Hull sides are lined with 9mm Oak faced plywood with solid Oak trim. Cabin sides to the saloon and galley are lined with solid Oak tongue and groove laid diagonally, the rest of the cabin sides are lined with 9mm Oak faced plywood, all trimmed with solid Oak. All the interior wood has been varnished to a gloss finish.

## **LOUNGE 10' 9"**



Steel, half glazed front doors, Oak panelled internally open out onto the front deck with lit storage steps down into the saloon.

**Fixed Furniture:** 2 x full height wardrobes. 1 x half height corner cupboard. 1 x bookcase. TV cabinet with flat screen TV, DVD player and radio/CD player with speakers throughout the boat. Fitted sofa bed with high quality padded and upholstered cushions, that converts into a double berth.

**Heating:** Valour Willow, cast iron solid fuel stove set on a raised ceramic tiled hearth and surround.

**Lighting:** 2 x large opening and removable windows, 4 x 12v, recessed halogen down-lights. 1 x 12v, recessed halogen light in the front step.

**Power:** 4 x 240v sockets.

**Flooring:** Carpet.





## **DINETTE 6' 9"**

'L' shaped dinette with sloping backs for added comfort and high quality padded and upholstered cushions. Oak table top with folding legs. The dinette converts into a double bed and has storage space beneath the seats.

**Other Features:** Pull-out chest freezer housed beneath the dinette.

**Heating:** Skirting radiator.

**Lighting:** 2 x large opening or removable windows. 4 x 12v, recessed halogen down-lights. 3 x 12v, wall lights.

**Flooring:** Carpet.

## **GALLEY 8'**

The galley has custom built units with Oak framed door and drawer fronts. Worktops are solid Granite with ceramic tiled splash-backs.

**Base units:** 1 x double cupboard that extends into the corners and has a drawer above. Full height oven housing with cupboards above and below. Fridge housing with matching door. Built-in wine rack.

**Wall Units:** 1 x glazed wall cabinet. 2 x wall mounted shelves.



**Appliances:** Belling, stainless steel eye-level oven and grill. Belling, stainless steel, inset four burner gas hob. Shoreline electric fridge. Shoreline, electric freezer. Domestic sized washer/dryer of choice. Beko dishwasher. Microwave. Stainless steel, under-slung sink with chrome monobloc tap.

**Heating:** Skirting radiator.

**Lighting:** 1 x large window. 1 x set of steel side doors, Oak panelled internally. 4 x 12v, recessed halogen down-lights.

**Power:** 4 x 240 sockets.

**Flooring:** Solid Oak.

## **BATHROOM 6' x 4'**



The cabin shower room has a white suite comprising:

**Suite:** Shower enclosure with chrome mixer taps, shower attachment and glazed doors. Corner vanity unit with large inset porcelain wash basin, chrome mixer tap and a cupboard beneath. Macerator pump-out toilet with remote holding tank. Full height cupboard accessed from the corridor. Large wall mounted mirror.

**Power:** 1 x shaver point.

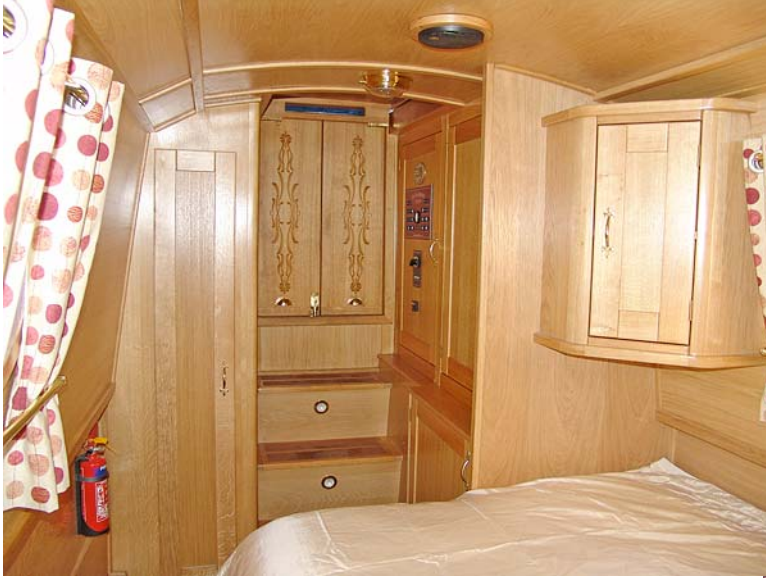
**Heating:** 1 x rail radiator.

**Flooring:** Marble effect vinyl flooring.



**Lighting:** 1 x porthole with opening and privacy glass and a further porthole in the corridor. 1 x 12v, ceiling mounted, round light. 1 x 12v, shower light. 1 x 12v shaver light. 1 x 12v, light with extractor fan.

### **BEDROOM 11' (including rear steps)**



**Furniture:** 4'6" domestic sized fixed double bed with storage space and waste tank underneath. 1 x full height wardrobe. Cupboard housing the washer/dryer with shelves above. Electric cupboard. Large wall mounted corner cupboard. Wall mounted shelf above the bed. Rear storage steps.



**Heating:** Skirting radiator.

**Lighting:** 2 x portholes with opening or removable. 1 x 12v, ceiling mounted, round light. 2 x 12v, recessed halogen down-lights. 2 x 12v, reading lights mounted above the bed. 2 x 12v, recessed halogen lights in the rear steps.

**Power:** 2 x 240v socket.

**Flooring:** Carpet.

### **SEMI-TRAD DECK 4' & STERN 3'**

Steel rear doors Oak panelled internally with sliding roof hatch lead onto the semi-trad deck where there are access panels to the engine and batteries. There are steel locker/seats to either side of the semi-trad deck. Steel stern doors lead to the rear deck and steering position.

**Controls:** The single lever engine control is mounted just inside the stern doors on the starboard.

**Flooring:** Marine ply boards with anti-slip deck tread.



## SPECIFICATIONS

### **BUILDER**

High quality steelwork with beautiful Oak fit-out by Elton Moss Boatbuilders.

### **BUILD DETAILS**

New  
Trad, Semi-Trad or Cruiser Style  
10mm/6mm/5mm/4mm.

### **INSULATION**

Spray foam forms the insulation behind the cabin linings.

### **BALLAST**

Bricks under floorboards.

### **DIMENSIONS**

Overall Length:	58'
Cabin Length:	46' 6"
Width:	6' 10"
Interior Headroom:	6' 6"
Well Deck:	4'
Draught	1' 10"

### **WINDOWS, DOORS & HATCHES**

**Port:** 2 x brass portholes. 3 x large fully opening windows.

**Starboard:** 2 x brass portholes. 2 x large fully opening windows. 1 x set of steel side doors, wood panelled internally.

**Front:** Steel hatch on bow locker. Steel, half glazed front doors Oak panelled internally.

**Rear:** Steel rear doors and sliding roof hatch, Oak panelled internally. Steel stern doors.

### **ENGINE & TRANSMISSION**

The boat is powered by a Isuzu 42 hp, 4 cylinder water cooled, marine diesel engine, coupled to a PRM 150 hydraulic gearbox turning the propeller. The exhaust is lagged, silenced and vents out under the side deck.

The engine powers twin alternators to charge the start battery and the 4 leisure batteries.

### **BOW-THRUSTER**

Electric Bow-thruster with controls at the stern.

### **GAS**

1 x 13kg Propane cylinder with manual change-over, housed in the bow locker, provides gas to the oven, grill and hob.

### **WATER**

The 200 litre stainless steel water tank is located under the front well deck. Water pump with pressure switch and accumulator is housed in the front wardrobe. The twin coil calorifier is heated by the diesel fired central heating boiler and/or the engine heat exchanger.

### **HEATING**

Heating is provided by the Valour solid fuel stove in the lounge and the Webasto diesel fired boiler running skirting radiators.

### **ELECTRICS**

240v circuit from landline with RCD.  
12v lights throughout protected by fuses.  
2 x 12v, 110/80 amp/hr engine driven alternators.  
1 x 12v, 110 amp/hr engine start battery.  
4 x 12v, 110 amp/hr leisure batteries.  
Engine driven generator.  
1800w Powermaster inverter.  
25 amp Powermaster battery charger.

### **FIRE SAFETY**

3 x Dry Powder extinguishers  
1 x Fire Blankets

### **EXTERIOR FINISH**

The exterior finish in quality coach enamels. The hull is protected by black bitumen and 4 sacrificial anodes.

### **ADDITIONAL ITEMS OF INVENTORY**

The boat comes equipped with the normal cruising inventory including ropes and fenders. Any additional items not listed must be negotiated separately with the builder.


**PLEASE NOTE:** *The information contained in this brochure is based on our own inspection and information provided by the owner and is intended as a sales aid only to assist you to decide whether you would like to move to the next stage and view the boat for yourself. Measurements can only be taken as approximate. Nothing contained herein constitutes a contract or offer. This is not a survey. We always recommend that a full survey is carried out prior to purchase.*



# Boat Finder Brokerage Services

*Brokers of Fine Quality Inland Waterways Craft*

 : 01270 760799

 : 07732 366185

 : sales@boatfinderbrokerage.co.uk

 : www.boatfinderbrokerage.co.uk

Office address: Edwin Foden Business Centre, Moss Lan, Sandbach, Cheshire CW11 3AE



**REF: BN001**

**£99,995**

- High quality steelwork by Elton Moss Boatbuilders with Trad, Semi-Trad or Cruiser stern.
- 42hp Isuzu marine diesel engine with PRM 150 hydraulic gearbox.
- Modern stylish fit-out in Oak offering luxurious 6 berth accommodation.
- Engine driven generator.

- Electric Bow-thruster.
- Powermaster 1800w inverter.
- Spray foam insulation.
- Stainless steel water tank.
- Diesel fired central heating & S/F stove.
- Washer/dryer and dishwasher.

*Boat Finder Brokerage Services is a trading name of Boatfinder Brokerage Services Ltd. Reg'd No. 4923033  
Reg'd Address: Edwin Foden Business Centre, Moss Lane, Sandbach, Cheshire CW11 3JW*



**REF: BN001**

## **BROKER'S SUMMARY**

**58ft New Trad, Semi-Trad OR Cruiser style narrow boat.** High quality steelwork with side doors and superb paint finish by Elton Moss Boatbuilders. Stylish modern fit-out in Oak, offering luxurious 6 berth accommodation. Powered by a Isuzu 42hp, 4 cylinder marine diesel engine.

This boat is fully laden with high quality equipment and materials from the engine and bow-thruster through to its granite worktops and tongue and groove lining.

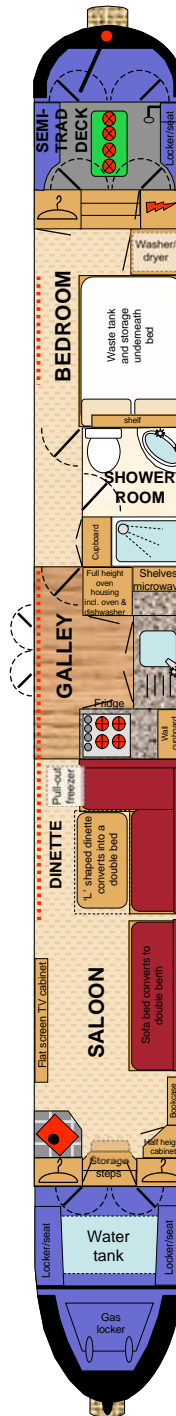
The builder is a highly reputable builder of bespoke boats and can therefore also build to your own specification.

This brochure provides an example specification for a previously completed boat, to provide an idea of the type of boat that can be built and the associated costs. A new boat can be built to this exact specification or changes can be made to create a truly bespoke boat (costs will vary depending on your requirements).

**NEW RECREATIONAL CRAFT DIRECTIVE CERTIFICATE OF CONFORMITY**

# LAYOUT DIAGRAM

(not to scale)





## **FROM THE BOW**

From the bow which holds the gas locker, there is a 4' self draining open well deck with locker/seats to either side. The bow thruster and the stainless steel water tank are located beneath the well deck with a surface mounted filler. The headlamp is mounted on the front of the roof.

## **GENERIC FIXTURES AND FITTINGS**

The ceilings are lined with 6mm Oak faced plywood with solid Oak trim. Hull sides are lined with 9mm Oak faced plywood with solid Oak trim. Cabin sides to the saloon and galley are lined with solid Oak tongue and groove laid diagonally, the rest of the cabin sides are lined with 9mm Oak faced plywood, all trimmed with solid Oak. All the interior wood has been varnished to a gloss finish.

## **LOUNGE 10' 9"**



Steel, half glazed front doors, Oak panelled internally open out onto the front deck with lit storage steps down into the saloon.

**Fixed Furniture:** 2 x full height wardrobes. 1 x half height corner cupboard. 1 x bookcase. TV cabinet with flat screen TV, DVD player and radio/CD player with speakers throughout the boat. Fitted sofa bed with high quality padded and upholstered cushions, that converts into a double berth.

**Heating:** Valour Willow, cast iron solid fuel stove set on a raised ceramic tiled hearth and surround.

**Lighting:** 2 x large opening and removable windows, 4 x 12v, recessed halogen down-lights. 1 x 12v, recessed halogen light in the front step.

**Power:** 4 x 240v sockets.

**Flooring:** Carpet.





## **DINETTE 6' 9"**

'L' shaped dinette with sloping backs for added comfort and high quality padded and upholstered cushions. Oak table top with folding legs. The dinette converts into a double bed and has storage space beneath the seats.

**Other Features:** Pull-out chest freezer housed beneath the dinette.

**Heating:** Skirting radiator.

**Lighting:** 2 x large opening or removable windows. 4 x 12v, recessed halogen down-lights. 3 x 12v, wall lights.

**Flooring:** Carpet.

## **GALLEY 8'**

The galley has custom built units with Oak framed door and drawer fronts. Worktops are solid Granite with ceramic tiled splash-backs.

**Base units:** 1 x double cupboard that extends into the corners and has a drawer above. Full height oven housing with cupboards above and below. Fridge housing with matching door. Built-in wine rack.

**Wall Units:** 1 x glazed wall cabinet. 2 x wall mounted shelves.



**Appliances:** Belling, stainless steel eye-level oven and grill. Belling, stainless steel, inset four burner gas hob. Shoreline electric fridge. Shoreline, electric freezer. Domestic sized washer/dryer of choice. Beko dishwasher. Microwave. Stainless steel, under-slung sink with chrome monobloc tap.

**Heating:** Skirting radiator.

**Lighting:** 1 x large window. 1 x set of steel side doors, Oak panelled internally. 4 x 12v, recessed halogen down-lights.

**Power:** 4 x 240 sockets.

**Flooring:** Solid Oak.

## **BATHROOM 6' x 4'**



The cabin shower room has a white suite comprising:

**Suite:** Shower enclosure with chrome mixer taps, shower attachment and glazed doors. Corner vanity unit with large inset porcelain wash basin, chrome mixer tap and a cupboard beneath. Macerator pump-out toilet with remote holding tank. Full height cupboard accessed from the corridor. Large wall mounted mirror.

**Power:** 1 x shaver point.

**Heating:** 1 x rail radiator.

**Flooring:** Marble effect vinyl flooring.



**Lighting:** 1 x porthole with opening and privacy glass and a further porthole in the corridor. 1 x 12v, ceiling mounted, round light. 1 x 12v, shower light. 1 x 12v shaver light. 1 x 12v, light with extractor fan.

### **BEDROOM 11' (including rear steps)**



**Furniture:** 4'6" domestic sized fixed double bed with storage space and waste tank underneath. 1 x full height wardrobe. Cupboard housing the washer/dryer with shelves above. Electric cupboard. Large wall mounted corner cupboard. Wall mounted shelf above the bed. Rear storage steps.



**Heating:** Skirting radiator.

**Lighting:** 2 x portholes with opening or removable. 1 x 12v, ceiling mounted, round light. 2 x 12v, recessed halogen down-lights. 2 x 12v, reading lights mounted above the bed. 2 x 12v, recessed halogen lights in the rear steps.

**Power:** 2 x 240v socket.

**Flooring:** Carpet.

### **SEMI-TRAD DECK 4' & STERN 3'**

Steel rear doors Oak panelled internally with sliding roof hatch lead onto the semi-trad deck where there are access panels to the engine and batteries. There are steel locker/seats to either side of the semi-trad deck. Steel stern doors lead to the rear deck and steering position.

**Controls:** The single lever engine control is mounted just inside the stern doors on the starboard.

**Flooring:** Marine ply boards with anti-slip deck tread.



## SPECIFICATIONS

### **BUILDER**

High quality steelwork with beautiful Oak fit-out by Elton Moss Boatbuilders.

### **BUILD DETAILS**

New  
Trad, Semi-Trad or Cruiser Style  
10mm/6mm/5mm/4mm.

### **INSULATION**

Spray foam forms the insulation behind the cabin linings.

### **BALLAST**

Bricks under floorboards.

### **DIMENSIONS**

Overall Length:	58'
Cabin Length:	46' 6"
Width:	6' 10"
Interior Headroom:	6' 6"
Well Deck:	4'
Draught	1' 10"

### **WINDOWS, DOORS & HATCHES**

**Port:** 2 x brass portholes. 3 x large fully opening windows.  
**Starboard:** 2 x brass portholes. 2 x large fully opening windows. 1 x set of steel side doors, wood panelled internally.  
**Front:** Steel hatch on bow locker. Steel, half glazed front doors Oak panelled internally.  
**Rear:** Steel rear doors and sliding roof hatch, Oak panelled internally. Steel stern doors.

### **ENGINE & TRANSMISSION**

The boat is powered by a Isuzu 42 hp, 4 cylinder water cooled, marine diesel engine, coupled to a PRM 150 hydraulic gearbox turning the propeller. The exhaust is lagged, silenced and vents out under the side deck.  
The engine powers twin alternators to charge the start battery and the 4 leisure batteries.

### **BOW-THRUSTER**

Electric Bow-thruster with controls at the stern.

### **GAS**

1 x 13kg Propane cylinder with manual change-over, housed in the bow locker, provides gas to the oven, grill and hob.

### **WATER**

The 200 litre stainless steel water tank is located under the front well deck. Water pump with pressure switch and accumulator is housed in the front wardrobe. The twin coil calorifier is heated by the diesel fired central heating boiler and/or the engine heat exchanger.

### **HEATING**

Heating is provided by the Valour solid fuel stove in the lounge and the Webasto diesel fired boiler running skirting radiators.

### **ELECTRICS**

240v circuit from landline with RCD.  
12v lights throughout protected by fuses.  
2 x 12v, 110/80 amp/hr engine driven alternators.  
1 x 12v, 110 amp/hr engine start battery.  
4 x 12v, 110 amp/hr leisure batteries.  
Engine driven generator.  
1800w Powermaster inverter.  
25 amp Powermaster battery charger.

### **FIRE SAFETY**

3 x Dry Powder extinguishers  
1 x Fire Blankets

### **EXTERIOR FINISH**

The exterior finish in quality coach enamels. The hull is protected by black bitumen and 4 sacrificial anodes.

### **ADDITIONAL ITEMS OF INVENTORY**

The boat comes equipped with the normal cruising inventory including ropes and fenders. Any additional items not listed must be negotiated separately with the builder.


**PLEASE NOTE: The information contained in this brochure is based on our own inspection and information provided by the owner and is intended as a sales aid only to assist you to decide whether you would like to move to the next stage and view the boat for yourself. Measurements can only be taken as approximate. Nothing contained herein constitutes a contract or offer. This is not a survey. We always recommend that a full survey is carried out prior to purchase.**




# Boat Finder Brokerage Services

*Brokers of Fine Quality Inland Waterways Craft*

 : 01270 760799

 : 07732 366185

 : sales@boatfinderbrokerage.co.uk

 : www.boatfinderbrokerage.co.uk

Office address: Edwin Foden Business Centre, Moss Lan, Sandbach, Cheshire CW11 3AE



**REF: BN001**

**£99,995**

- High quality steelwork by Elton Moss Boatbuilders with Trad, Semi-Trad or Cruiser stern.
- 42hp Isuzu marine diesel engine with PRM 150 hydraulic gearbox.
- Modern stylish fit-out in Oak offering luxurious 6 berth accommodation.
- Engine driven generator.

- Electric Bow-thruster.
- Powermaster 1800w inverter.
- Spray foam insulation.
- Stainless steel water tank.
- Diesel fired central heating & S/F stove.
- Washer/dryer and dishwasher.

*Boat Finder Brokerage Services is a trading name of Boatfinder Brokerage Services Ltd. Reg'd No. 4923033  
Reg'd Address: Edwin Foden Business Centre, Moss Lane, Sandbach, Cheshire CW11 3JW*



**REF: BN001**

## **BROKER'S SUMMARY**

**58ft New Trad, Semi-Trad OR Cruiser style narrow boat.** High quality steelwork with side doors and superb paint finish by Elton Moss Boatbuilders. Stylish modern fit-out in Oak, offering luxurious 6 berth accommodation. Powered by a Isuzu 42hp, 4 cylinder marine diesel engine.

This boat is fully laden with high quality equipment and materials from the engine and bow-thruster through to its granite worktops and tongue and groove lining.

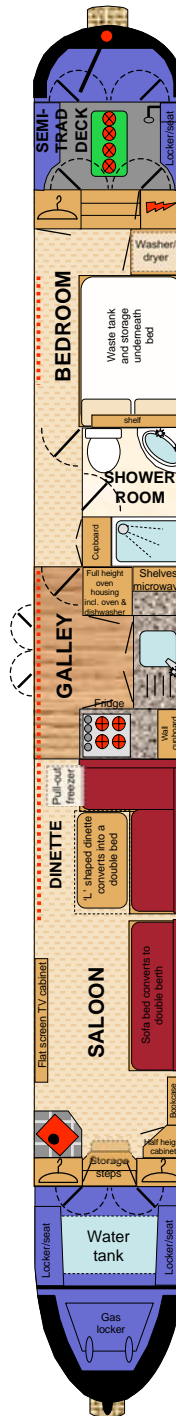
The builder is a highly reputable builder of bespoke boats and can therefore also build to your own specification.

This brochure provides an example specification for a previously completed boat, to provide an idea of the type of boat that can be built and the associated costs. A new boat can be built to this exact specification or changes can be made to create a truly bespoke boat (costs will vary depending on your requirements).

**NEW RECREATIONAL CRAFT DIRECTIVE CERTIFICATE OF CONFORMITY**

# LAYOUT DIAGRAM

(not to scale)





## **FROM THE BOW**

From the bow which holds the gas locker, there is a 4' self draining open well deck with locker/seats to either side. The bow thruster and the stainless steel water tank are located beneath the well deck with a surface mounted filler. The headlamp is mounted on the front of the roof.

## **GENERIC FIXTURES AND FITTINGS**

The ceilings are lined with 6mm Oak faced plywood with solid Oak trim. Hull sides are lined with 9mm Oak faced plywood with solid Oak trim. Cabin sides to the saloon and galley are lined with solid Oak tongue and groove laid diagonally, the rest of the cabin sides are lined with 9mm Oak faced plywood, all trimmed with solid Oak. All the interior wood has been varnished to a gloss finish.

## **LOUNGE 10' 9"**



Steel, half glazed front doors, Oak panelled internally open out onto the front deck with lit storage steps down into the saloon.

**Fixed Furniture:** 2 x full height wardrobes. 1 x half height corner cupboard. 1 x bookcase. TV cabinet with flat screen TV, DVD player and radio/CD player with speakers throughout the boat. Fitted sofa bed with high quality padded and upholstered cushions, that converts into a double berth.

**Heating:** Valour Willow, cast iron solid fuel stove set on a raised ceramic tiled hearth and surround.

**Lighting:** 2 x large opening and removable windows, 4 x 12v, recessed halogen down-lights. 1 x 12v, recessed halogen light in the front step.

**Power:** 4 x 240v sockets.

**Flooring:** Carpet.





## **DINETTE 6' 9"**

'L' shaped dinette with sloping backs for added comfort and high quality padded and upholstered cushions. Oak table top with folding legs. The dinette converts into a double bed and has storage space beneath the seats.

**Other Features:** Pull-out chest freezer housed beneath the dinette.

**Heating:** Skirting radiator.

**Lighting:** 2 x large opening or removable windows. 4 x 12v, recessed halogen down-lights. 3 x 12v, wall lights.

**Flooring:** Carpet.

## **GALLEY 8'**

The galley has custom built units with Oak framed door and drawer fronts. Worktops are solid Granite with ceramic tiled splash-backs.

**Base units:** 1 x double cupboard that extends into the corners and has a drawer above. Full height oven housing with cupboards above and below. Fridge housing with matching door. Built-in wine rack.

**Wall Units:** 1 x glazed wall cabinet. 2 x wall mounted shelves.



**Appliances:** Belling, stainless steel eye-level oven and grill. Belling, stainless steel, inset four burner gas hob. Shoreline electric fridge. Shoreline, electric freezer. Domestic sized washer/dryer of choice. Beko dishwasher. Microwave. Stainless steel, under-slung sink with chrome monobloc tap.

**Heating:** Skirting radiator.

**Lighting:** 1 x large window. 1 x set of steel side doors, Oak panelled internally. 4 x 12v, recessed halogen down-lights.

**Power:** 4 x 240 sockets.

**Flooring:** Solid Oak.

## **BATHROOM 6' x 4'**



The cabin shower room has a white suite comprising:

**Suite:** Shower enclosure with chrome mixer taps, shower attachment and glazed doors. Corner vanity unit with large inset porcelain wash basin, chrome mixer tap and a cupboard beneath. Macerator pump-out toilet with remote holding tank. Full height cupboard accessed from the corridor. Large wall mounted mirror.

**Power:** 1 x shaver point.

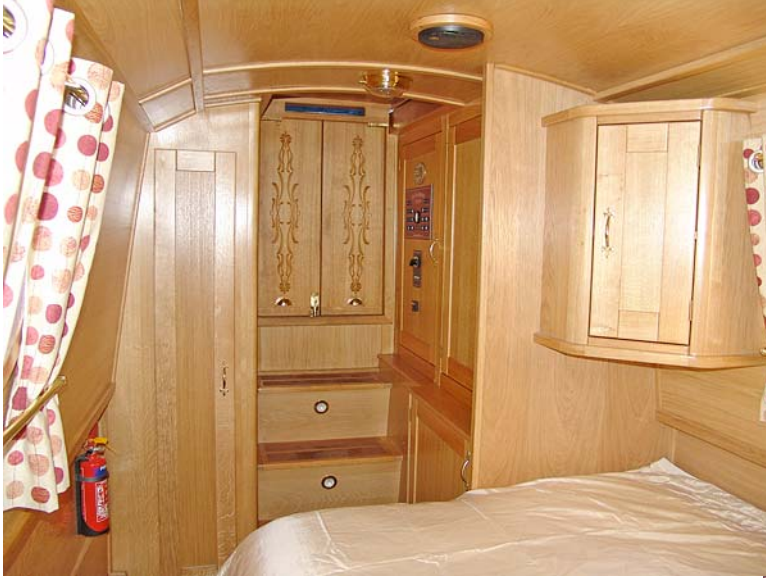
**Heating:** 1 x rail radiator.

**Flooring:** Marble effect vinyl flooring.



**Lighting:** 1 x porthole with opening and privacy glass and a further porthole in the corridor. 1 x 12v, ceiling mounted, round light. 1 x 12v, shower light. 1 x 12v shaver light. 1 x 12v, light with extractor fan.

### **BEDROOM 11' (including rear steps)**



**Furniture:** 4'6" domestic sized fixed double bed with storage space and waste tank underneath. 1 x full height wardrobe. Cupboard housing the washer/dryer with shelves above. Electric cupboard. Large wall mounted corner cupboard. Wall mounted shelf above the bed. Rear storage steps.



**Heating:** Skirting radiator.

**Lighting:** 2 x portholes with opening or removable. 1 x 12v, ceiling mounted, round light. 2 x 12v, recessed halogen down-lights. 2 x 12v, reading lights mounted above the bed. 2 x 12v, recessed halogen lights in the rear steps.

**Power:** 2 x 240v socket.

**Flooring:** Carpet.

### **SEMI-TRAD DECK 4' & STERN 3'**

Steel rear doors Oak panelled internally with sliding roof hatch lead onto the semi-trad deck where there are access panels to the engine and batteries. There are steel locker/seats to either side of the semi-trad deck. Steel stern doors lead to the rear deck and steering position.

**Controls:** The single lever engine control is mounted just inside the stern doors on the starboard.

**Flooring:** Marine ply boards with anti-slip deck tread.



## SPECIFICATIONS

### **BUILDER**

High quality steelwork with beautiful Oak fit-out by Elton Moss Boatbuilders.

### **BUILD DETAILS**

New  
Trad, Semi-Trad or Cruiser Style  
10mm/6mm/5mm/4mm.

### **INSULATION**

Spray foam forms the insulation behind the cabin linings.

### **BALLAST**

Bricks under floorboards.

### **DIMENSIONS**

Overall Length:	58'
Cabin Length:	46' 6"
Width:	6' 10"
Interior Headroom:	6' 6"
Well Deck:	4'
Draught	1' 10"

### **WINDOWS, DOORS & HATCHES**

**Port:** 2 x brass portholes. 3 x large fully opening windows.

**Starboard:** 2 x brass portholes. 2 x large fully opening windows. 1 x set of steel side doors, wood panelled internally.

**Front:** Steel hatch on bow locker. Steel, half glazed front doors Oak panelled internally.

**Rear:** Steel rear doors and sliding roof hatch, Oak panelled internally. Steel stern doors.

### **ENGINE & TRANSMISSION**

The boat is powered by a Isuzu 42 hp, 4 cylinder water cooled, marine diesel engine, coupled to a PRM 150 hydraulic gearbox turning the propeller. The exhaust is lagged, silenced and vents out under the side deck.

The engine powers twin alternators to charge the start battery and the 4 leisure batteries.

### **BOW-THRUSTER**

Electric Bow-thruster with controls at the stern.

### **GAS**

1 x 13kg Propane cylinder with manual change-over, housed in the bow locker, provides gas to the oven, grill and hob.

### **WATER**

The 200 litre stainless steel water tank is located under the front well deck. Water pump with pressure switch and accumulator is housed in the front wardrobe. The twin coil calorifier is heated by the diesel fired central heating boiler and/or the engine heat exchanger.

### **HEATING**

Heating is provided by the Valour solid fuel stove in the lounge and the Webasto diesel fired boiler running skirting radiators.

### **ELECTRICS**

240v circuit from landline with RCD.

12v lights throughout protected by fuses.

2 x 12v, 110/80 amp/hr engine driven alternators.

1 x 12v, 110 amp/hr engine start battery.

4 x 12v, 110 amp/hr leisure batteries.

Engine driven generator.

1800w Powermaster inverter.

25 amp Powermaster battery charger.

### **FIRE SAFETY**

3 x Dry Powder extinguishers

1 x Fire Blankets

### **EXTERIOR FINISH**

The exterior finish in quality coach enamels. The hull is protected by black bitumen and 4 sacrificial anodes.

### **ADDITIONAL ITEMS OF INVENTORY**

The boat comes equipped with the normal cruising inventory including ropes and fenders. Any additional items not listed must be negotiated separately with the builder.


**PLEASE NOTE:** *The information contained in this brochure is based on our own inspection and information provided by the owner and is intended as a sales aid only to assist you to decide whether you would like to move to the next stage and view the boat for yourself. Measurements can only be taken as approximate. Nothing contained herein constitutes a contract or offer. This is not a survey. We always recommend that a full survey is carried out prior to purchase.*



# Boat Finder Brokerage Services

*Brokers of Fine Quality Inland Waterways Craft*

 : 01270 760799

 : 07732 366185

 : sales@boatfinderbrokerage.co.uk

 : www.boatfinderbrokerage.co.uk

Office address: Edwin Foden Business Centre, Moss Lan, Sandbach, Cheshire CW11 3AE



**REF: BN001**

**£99,995**

- High quality steelwork by Elton Moss Boatbuilders with Trad, Semi-Trad or Cruiser stern.
- 42hp Isuzu marine diesel engine with PRM 150 hydraulic gearbox.
- Modern stylish fit-out in Oak offering luxurious 6 berth accommodation.
- Engine driven generator.

- Electric Bow-thruster.
- Powermaster 1800w inverter.
- Spray foam insulation.
- Stainless steel water tank.
- Diesel fired central heating & S/F stove.
- Washer/dryer and dishwasher.

*Boat Finder Brokerage Services is a trading name of Boatfinder Brokerage Services Ltd. Reg'd No. 4923033  
Reg'd Address: Edwin Foden Business Centre, Moss Lane, Sandbach, Cheshire CW11 3JW*



**REF: BN001**

## **BROKER'S SUMMARY**

**58ft New Trad, Semi-Trad OR Cruiser style narrow boat.** High quality steelwork with side doors and superb paint finish by Elton Moss Boatbuilders. Stylish modern fit-out in Oak, offering luxurious 6 berth accommodation. Powered by a Isuzu 42hp, 4 cylinder marine diesel engine.

This boat is fully laden with high quality equipment and materials from the engine and bow-thruster through to its granite worktops and tongue and groove lining.

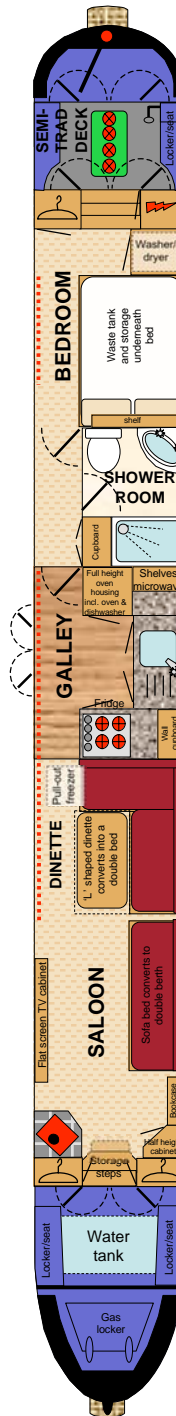
The builder is a highly reputable builder of bespoke boats and can therefore also build to your own specification.

This brochure provides an example specification for a previously completed boat, to provide an idea of the type of boat that can be built and the associated costs. A new boat can be built to this exact specification or changes can be made to create a truly bespoke boat (costs will vary depending on your requirements).

**NEW RECREATIONAL CRAFT DIRECTIVE CERTIFICATE OF CONFORMITY**

# LAYOUT DIAGRAM

(not to scale)





## **FROM THE BOW**

From the bow which holds the gas locker, there is a 4' self draining open well deck with locker/seats to either side. The bow thruster and the stainless steel water tank are located beneath the well deck with a surface mounted filler. The headlamp is mounted on the front of the roof.

## **GENERIC FIXTURES AND FITTINGS**

The ceilings are lined with 6mm Oak faced plywood with solid Oak trim. Hull sides are lined with 9mm Oak faced plywood with solid Oak trim. Cabin sides to the saloon and galley are lined with solid Oak tongue and groove laid diagonally, the rest of the cabin sides are lined with 9mm Oak faced plywood, all trimmed with solid Oak. All the interior wood has been varnished to a gloss finish.

## **LOUNGE 10' 9"**



Steel, half glazed front doors, Oak panelled internally open out onto the front deck with lit storage steps down into the saloon.

**Fixed Furniture:** 2 x full height wardrobes. 1 x half height corner cupboard. 1 x bookcase. TV cabinet with flat screen TV, DVD player and radio/CD player with speakers throughout the boat. Fitted sofa bed with high quality padded and upholstered cushions, that converts into a double berth.

**Heating:** Valour Willow, cast iron solid fuel stove set on a raised ceramic tiled hearth and surround.

**Lighting:** 2 x large opening and removable windows, 4 x 12v, recessed halogen down-lights. 1 x 12v, recessed halogen light in the front step.

**Power:** 4 x 240v sockets.

**Flooring:** Carpet.





## **DINETTE 6' 9"**

'L' shaped dinette with sloping backs for added comfort and high quality padded and upholstered cushions. Oak table top with folding legs. The dinette converts into a double bed and has storage space beneath the seats.

**Other Features:** Pull-out chest freezer housed beneath the dinette.

**Heating:** Skirting radiator.

**Lighting:** 2 x large opening or removable windows. 4 x 12v, recessed halogen down-lights. 3 x 12v, wall lights.

**Flooring:** Carpet.

## **GALLEY 8'**

The galley has custom built units with Oak framed door and drawer fronts. Worktops are solid Granite with ceramic tiled splash-backs.

**Base units:** 1 x double cupboard that extends into the corners and has a drawer above. Full height oven housing with cupboards above and below. Fridge housing with matching door. Built-in wine rack.

**Wall Units:** 1 x glazed wall cabinet. 2 x wall mounted shelves.



**Appliances:** Belling, stainless steel eye-level oven and grill. Belling, stainless steel, inset four burner gas hob. Shoreline electric fridge. Shoreline, electric freezer. Domestic sized washer/dryer of choice. Beko dishwasher. Microwave. Stainless steel, under-slung sink with chrome monobloc tap.

**Heating:** Skirting radiator.

**Lighting:** 1 x large window. 1 x set of steel side doors, Oak panelled internally. 4 x 12v, recessed halogen down-lights.

**Power:** 4 x 240 sockets.

**Flooring:** Solid Oak.

## **BATHROOM 6' x 4'**



The cabin shower room has a white suite comprising:

**Suite:** Shower enclosure with chrome mixer taps, shower attachment and glazed doors. Corner vanity unit with large inset porcelain wash basin, chrome mixer tap and a cupboard beneath. Macerator pump-out toilet with remote holding tank. Full height cupboard accessed from the corridor. Large wall mounted mirror.

**Power:** 1 x shaver point.

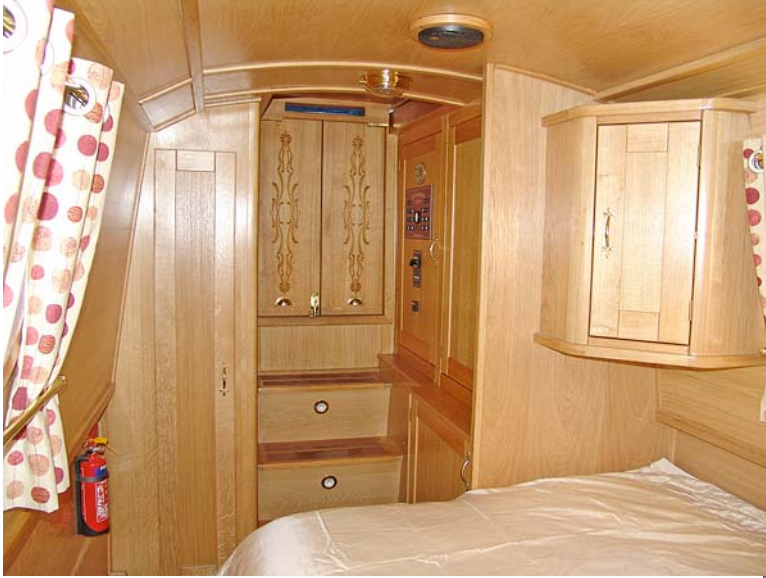
**Heating:** 1 x rail radiator.

**Flooring:** Marble effect vinyl flooring.



**Lighting:** 1 x porthole with opening and privacy glass and a further porthole in the corridor. 1 x 12v, ceiling mounted, round light. 1 x 12v, shower light. 1 x 12v shaver light. 1 x 12v, light with extractor fan.

### **BEDROOM 11' (including rear steps)**



**Furniture:** 4'6" domestic sized fixed double bed with storage space and waste tank underneath. 1 x full height wardrobe. Cupboard housing the washer/dryer with shelves above. Electric cupboard. Large wall mounted corner cupboard. Wall mounted shelf above the bed. Rear storage steps.



**Heating:** Skirting radiator.

**Lighting:** 2 x portholes with opening or removable. 1 x 12v, ceiling mounted, round light. 2 x 12v, recessed halogen down-lights. 2 x 12v, reading lights mounted above the bed. 2 x 12v, recessed halogen lights in the rear steps.

**Power:** 2 x 240v socket.

**Flooring:** Carpet.

### **SEMI-TRAD DECK 4' & STERN 3'**

Steel rear doors Oak panelled internally with sliding roof hatch lead onto the semi-trad deck where there are access panels to the engine and batteries. There are steel locker/seats to either side of the semi-trad deck. Steel stern doors lead to the rear deck and steering position.

**Controls:** The single lever engine control is mounted just inside the stern doors on the starboard.

**Flooring:** Marine ply boards with anti-slip deck tread.



## SPECIFICATIONS

### **BUILDER**

High quality steelwork with beautiful Oak fit-out by Elton Moss Boatbuilders.

### **BUILD DETAILS**

New  
Trad, Semi-Trad or Cruiser Style  
10mm/6mm/5mm/4mm.

### **INSULATION**

Spray foam forms the insulation behind the cabin linings.

### **BALLAST**

Bricks under floorboards.

### **DIMENSIONS**

Overall Length:	58'
Cabin Length:	46' 6"
Width:	6' 10"
Interior Headroom:	6' 6"
Well Deck:	4'
Draught	1' 10"

### **WINDOWS, DOORS & HATCHES**

**Port:** 2 x brass portholes. 3 x large fully opening windows.

**Starboard:** 2 x brass portholes. 2 x large fully opening windows. 1 x set of steel side doors, wood panelled internally.

**Front:** Steel hatch on bow locker. Steel, half glazed front doors Oak panelled internally.

**Rear:** Steel rear doors and sliding roof hatch, Oak panelled internally. Steel stern doors.

### **ENGINE & TRANSMISSION**

The boat is powered by a Isuzu 42 hp, 4 cylinder water cooled, marine diesel engine, coupled to a PRM 150 hydraulic gearbox turning the propeller. The exhaust is lagged, silenced and vents out under the side deck.

The engine powers twin alternators to charge the start battery and the 4 leisure batteries.

### **BOW-THRUSTER**

Electric Bow-thruster with controls at the stern.

### **GAS**

1 x 13kg Propane cylinder with manual change-over, housed in the bow locker, provides gas to the oven, grill and hob.

### **WATER**

The 200 litre stainless steel water tank is located under the front well deck. Water pump with pressure switch and accumulator is housed in the front wardrobe. The twin coil calorifier is heated by the diesel fired central heating boiler and/or the engine heat exchanger.

### **HEATING**

Heating is provided by the Valour solid fuel stove in the lounge and the Webasto diesel fired boiler running skirting radiators.

### **ELECTRICS**

240v circuit from landline with RCD.

12v lights throughout protected by fuses.

2 x 12v, 110/80 amp/hr engine driven alternators.

1 x 12v, 110 amp/hr engine start battery.

4 x 12v, 110 amp/hr leisure batteries.

Engine driven generator.

1800w Powermaster inverter.

25 amp Powermaster battery charger.

### **FIRE SAFETY**

3 x Dry Powder extinguishers

1 x Fire Blankets

### **EXTERIOR FINISH**

The exterior finish in quality coach enamels. The hull is protected by black bitumen and 4 sacrificial anodes.

### **ADDITIONAL ITEMS OF INVENTORY**


The boat comes equipped with the normal cruising inventory including ropes and fenders. Any additional items not listed must be negotiated separately with the builder.


**PLEASE NOTE:** *The information contained in this brochure is based on our own inspection and information provided by the owner and is intended as a sales aid only to assist you to decide whether you would like to move to the next stage and view the boat for yourself. Measurements can only be taken as approximate. Nothing contained herein constitutes a contract or offer. This is not a survey. We always recommend that a full survey is carried out prior to purchase.*



# Boat Finder Brokerage Services

*Brokers of Fine Quality Inland Waterways Craft*

 : 01270 760799

 : 07732 366185

 : sales@boatfinderbrokerage.co.uk

 : www.boatfinderbrokerage.co.uk

Office address: Edwin Foden Business Centre, Moss Lan, Sandbach, Cheshire CW11 3AE



**REF: BN001**

**£99,995**

- High quality steelwork by Elton Moss Boatbuilders with Trad, Semi-Trad or Cruiser stern.
- 42hp Isuzu marine diesel engine with PRM 150 hydraulic gearbox.
- Modern stylish fit-out in Oak offering luxurious 6 berth accommodation.
- Engine driven generator.

- Electric Bow-thruster.
- Powermaster 1800w inverter.
- Spray foam insulation.
- Stainless steel water tank.
- Diesel fired central heating & S/F stove.
- Washer/dryer and dishwasher.

*Boat Finder Brokerage Services is a trading name of Boatfinder Brokerage Services Ltd. Reg'd No. 4923033  
Reg'd Address: Edwin Foden Business Centre, Moss Lane, Sandbach, Cheshire CW11 3JW*



**REF: BN001**

## **BROKER'S SUMMARY**

**58ft New Trad, Semi-Trad OR Cruiser style narrow boat.** High quality steelwork with side doors and superb paint finish by Elton Moss Boatbuilders. Stylish modern fit-out in Oak, offering luxurious 6 berth accommodation. Powered by a Isuzu 42hp, 4 cylinder marine diesel engine.

This boat is fully laden with high quality equipment and materials from the engine and bow-thruster through to its granite worktops and tongue and groove lining.

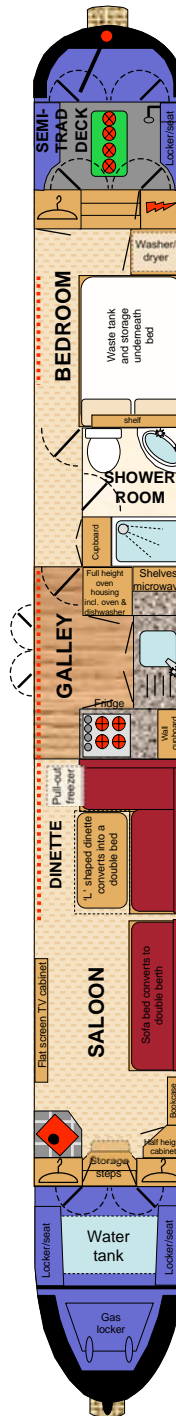
The builder is a highly reputable builder of bespoke boats and can therefore also build to your own specification.

This brochure provides an example specification for a previously completed boat, to provide an idea of the type of boat that can be built and the associated costs. A new boat can be built to this exact specification or changes can be made to create a truly bespoke boat (costs will vary depending on your requirements).

**NEW RECREATIONAL CRAFT DIRECTIVE CERTIFICATE OF CONFORMITY**

# LAYOUT DIAGRAM

(not to scale)





## **FROM THE BOW**

From the bow which holds the gas locker, there is a 4' self draining open well deck with locker/seats to either side. The bow thruster and the stainless steel water tank are located beneath the well deck with a surface mounted filler. The headlamp is mounted on the front of the roof.

## **GENERIC FIXTURES AND FITTINGS**

The ceilings are lined with 6mm Oak faced plywood with solid Oak trim. Hull sides are lined with 9mm Oak faced plywood with solid Oak trim. Cabin sides to the saloon and galley are lined with solid Oak tongue and groove laid diagonally, the rest of the cabin sides are lined with 9mm Oak faced plywood, all trimmed with solid Oak. All the interior wood has been varnished to a gloss finish.

## **LOUNGE 10' 9"**



Steel, half glazed front doors, Oak panelled internally open out onto the front deck with lit storage steps down into the saloon.

**Fixed Furniture:** 2 x full height wardrobes. 1 x half height corner cupboard. 1 x bookcase. TV cabinet with flat screen TV, DVD player and radio/CD player with speakers throughout the boat. Fitted sofa bed with high quality padded and upholstered cushions, that converts into a double berth.

**Heating:** Valour Willow, cast iron solid fuel stove set on a raised ceramic tiled hearth and surround.

**Lighting:** 2 x large opening and removable windows, 4 x 12v, recessed halogen down-lights. 1 x 12v, recessed halogen light in the front step.

**Power:** 4 x 240v sockets.

**Flooring:** Carpet.





## **DINETTE 6' 9"**

'L' shaped dinette with sloping backs for added comfort and high quality padded and upholstered cushions. Oak table top with folding legs. The dinette converts into a double bed and has storage space beneath the seats.

**Other Features:** Pull-out chest freezer housed beneath the dinette.

**Heating:** Skirting radiator.

**Lighting:** 2 x large opening or removable windows. 4 x 12v, recessed halogen down-lights. 3 x 12v, wall lights.

**Flooring:** Carpet.

## **GALLEY 8'**

The galley has custom built units with Oak framed door and drawer fronts. Worktops are solid Granite with ceramic tiled splash-backs.

**Base units:** 1 x double cupboard that extends into the corners and has a drawer above. Full height oven housing with cupboards above and below. Fridge housing with matching door. Built-in wine rack.

**Wall Units:** 1 x glazed wall cabinet. 2 x wall mounted shelves.



**Appliances:** Belling, stainless steel eye-level oven and grill. Belling, stainless steel, inset four burner gas hob. Shoreline electric fridge. Shoreline, electric freezer. Domestic sized washer/dryer of choice. Beko dishwasher. Microwave. Stainless steel, under-slung sink with chrome monobloc tap.

**Heating:** Skirting radiator.

**Lighting:** 1 x large window. 1 x set of steel side doors, Oak panelled internally. 4 x 12v, recessed halogen down-lights.

**Power:** 4 x 240 sockets.

**Flooring:** Solid Oak.

## **BATHROOM 6' x 4'**



The cabin shower room has a white suite comprising:

**Suite:** Shower enclosure with chrome mixer taps, shower attachment and glazed doors. Corner vanity unit with large inset porcelain wash basin, chrome mixer tap and a cupboard beneath. Macerator pump-out toilet with remote holding tank. Full height cupboard accessed from the corridor. Large wall mounted mirror.

**Power:** 1 x shaver point.

**Heating:** 1 x rail radiator.

**Flooring:** Marble effect vinyl flooring.



**Lighting:** 1 x porthole with opening and privacy glass and a further porthole in the corridor. 1 x 12v, ceiling mounted, round light. 1 x 12v, shower light. 1 x 12v shaver light. 1 x 12v, light with extractor fan.

### **BEDROOM 11' (including rear steps)**



**Furniture:** 4'6" domestic sized fixed double bed with storage space and waste tank underneath. 1 x full height wardrobe. Cupboard housing the washer/dryer with shelves above. Electric cupboard. Large wall mounted corner cupboard. Wall mounted shelf above the bed. Rear storage steps.



**Heating:** Skirting radiator.

**Lighting:** 2 x portholes with opening or removable. 1 x 12v, ceiling mounted, round light. 2 x 12v, recessed halogen down-lights. 2 x 12v, reading lights mounted above the bed. 2 x 12v, recessed halogen lights in the rear steps.

**Power:** 2 x 240v socket.

**Flooring:** Carpet.

### **SEMI-TRAD DECK 4' & STERN 3'**

Steel rear doors Oak panelled internally with sliding roof hatch lead onto the semi-trad deck where there are access panels to the engine and batteries. There are steel locker/seats to either side of the semi-trad deck. Steel stern doors lead to the rear deck and steering position.

**Controls:** The single lever engine control is mounted just inside the stern doors on the starboard.

**Flooring:** Marine ply boards with anti-slip deck tread.



## SPECIFICATIONS

### **BUILDER**

High quality steelwork with beautiful Oak fit-out by Elton Moss Boatbuilders.

### **BUILD DETAILS**

New  
Trad, Semi-Trad or Cruiser Style  
10mm/6mm/5mm/4mm.

### **INSULATION**

Spray foam forms the insulation behind the cabin linings.

### **BALLAST**

Bricks under floorboards.

### **DIMENSIONS**

Overall Length:	58'
Cabin Length:	46' 6"
Width:	6' 10"
Interior Headroom:	6' 6"
Well Deck:	4'
Draught	1' 10"

### **WINDOWS, DOORS & HATCHES**

**Port:** 2 x brass portholes. 3 x large fully opening windows.

**Starboard:** 2 x brass portholes. 2 x large fully opening windows. 1 x set of steel side doors, wood panelled internally.

**Front:** Steel hatch on bow locker. Steel, half glazed front doors Oak panelled internally.

**Rear:** Steel rear doors and sliding roof hatch, Oak panelled internally. Steel stern doors.

### **ENGINE & TRANSMISSION**

The boat is powered by a Isuzu 42 hp, 4 cylinder water cooled, marine diesel engine, coupled to a PRM 150 hydraulic gearbox turning the propeller. The exhaust is lagged, silenced and vents out under the side deck.

The engine powers twin alternators to charge the start battery and the 4 leisure batteries.

### **BOW-THRUSTER**

Electric Bow-thruster with controls at the stern.

### **GAS**

1 x 13kg Propane cylinder with manual change-over, housed in the bow locker, provides gas to the oven, grill and hob.

### **WATER**

The 200 litre stainless steel water tank is located under the front well deck. Water pump with pressure switch and accumulator is housed in the front wardrobe. The twin coil calorifier is heated by the diesel fired central heating boiler and/or the engine heat exchanger.

### **HEATING**

Heating is provided by the Valour solid fuel stove in the lounge and the Webasto diesel fired boiler running skirting radiators.

### **ELECTRICS**

240v circuit from landline with RCD.

12v lights throughout protected by fuses.

2 x 12v, 110/80 amp/hr engine driven alternators.

1 x 12v, 110 amp/hr engine start battery.

4 x 12v, 110 amp/hr leisure batteries.

Engine driven generator.

1800w Powermaster inverter.

25 amp Powermaster battery charger.

### **FIRE SAFETY**

3 x Dry Powder extinguishers

1 x Fire Blankets

### **EXTERIOR FINISH**

The exterior finish in quality coach enamels. The hull is protected by black bitumen and 4 sacrificial anodes.

### **ADDITIONAL ITEMS OF INVENTORY**

The boat comes equipped with the normal cruising inventory including ropes and fenders. Any additional items not listed must be negotiated separately with the builder.

**PLEASE NOTE: The information contained in this brochure is based on our own inspection and information provided by the owner and is intended as a sales aid only to assist you to decide whether you would like to move to the next stage and view the boat for yourself. Measurements can only be taken as approximate. Nothing contained herein constitutes a contract or offer. This is not a survey. We always recommend that a full survey is carried out prior to purchase.**



# Boat Finder Brokerage Services

*Brokers of Fine Quality Inland Waterways Craft*

 : 01270 760799

 : 07732 366185

 : sales@boatfinderbrokerage.co.uk

 : www.boatfinderbrokerage.co.uk

Office address: Edwin Foden Business Centre, Moss Lan, Sandbach, Cheshire CW11 3AE



**REF: BN001**

**£99,995**

- High quality steelwork by Elton Moss Boatbuilders with Trad, Semi-Trad or Cruiser stern.
- 42hp Isuzu marine diesel engine with PRM 150 hydraulic gearbox.
- Modern stylish fit-out in Oak offering luxurious 6 berth accommodation.
- Engine driven generator.

- Electric Bow-thruster.
- Powermaster 1800w inverter.
- Spray foam insulation.
- Stainless steel water tank.
- Diesel fired central heating & S/F stove.
- Washer/dryer and dishwasher.

*Boat Finder Brokerage Services is a trading name of Boatfinder Brokerage Services Ltd. Reg'd No. 4923033  
Reg'd Address: Edwin Foden Business Centre, Moss Lane, Sandbach, Cheshire CW11 3JW*



**REF: BN001**

## **BROKER'S SUMMARY**

**58ft New Trad, Semi-Trad OR Cruiser style narrow boat.** High quality steelwork with side doors and superb paint finish by Elton Moss Boatbuilders. Stylish modern fit-out in Oak, offering luxurious 6 berth accommodation. Powered by a Isuzu 42hp, 4 cylinder marine diesel engine.

This boat is fully laden with high quality equipment and materials from the engine and bow-thruster through to its granite worktops and tongue and groove lining.

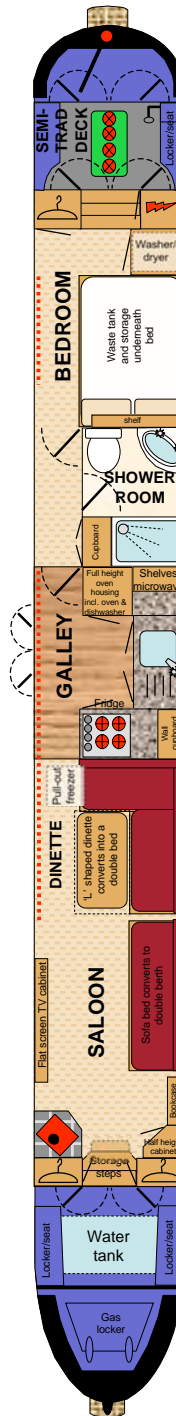
The builder is a highly reputable builder of bespoke boats and can therefore also build to your own specification.

This brochure provides an example specification for a previously completed boat, to provide an idea of the type of boat that can be built and the associated costs. A new boat can be built to this exact specification or changes can be made to create a truly bespoke boat (costs will vary depending on your requirements).

**NEW RECREATIONAL CRAFT DIRECTIVE CERTIFICATE OF CONFORMITY**

# LAYOUT DIAGRAM

(not to scale)





## **FROM THE BOW**

From the bow which holds the gas locker, there is a 4' self draining open well deck with locker/seats to either side. The bow thruster and the stainless steel water tank are located beneath the well deck with a surface mounted filler. The headlamp is mounted on the front of the roof.

## **GENERIC FIXTURES AND FITTINGS**

The ceilings are lined with 6mm Oak faced plywood with solid Oak trim. Hull sides are lined with 9mm Oak faced plywood with solid Oak trim. Cabin sides to the saloon and galley are lined with solid Oak tongue and groove laid diagonally, the rest of the cabin sides are lined with 9mm Oak faced plywood, all trimmed with solid Oak. All the interior wood has been varnished to a gloss finish.

## **LOUNGE 10' 9"**



Steel, half glazed front doors, Oak panelled internally open out onto the front deck with lit storage steps down into the saloon.

**Fixed Furniture:** 2 x full height wardrobes. 1 x half height corner cupboard. 1 x bookcase. TV cabinet with flat screen TV, DVD player and radio/CD player with speakers throughout the boat. Fitted sofa bed with high quality padded and upholstered cushions, that converts into a double berth.

**Heating:** Valour Willow, cast iron solid fuel stove set on a raised ceramic tiled hearth and surround.

**Lighting:** 2 x large opening and removable windows, 4 x 12v, recessed halogen down-lights. 1 x 12v, recessed halogen light in the front step.

**Power:** 4 x 240v sockets.

**Flooring:** Carpet.





## **DINETTE 6' 9"**

'L' shaped dinette with sloping backs for added comfort and high quality padded and upholstered cushions. Oak table top with folding legs. The dinette converts into a double bed and has storage space beneath the seats.

**Other Features:** Pull-out chest freezer housed beneath the dinette.

**Heating:** Skirting radiator.

**Lighting:** 2 x large opening or removable windows. 4 x 12v, recessed halogen down-lights. 3 x 12v, wall lights.

**Flooring:** Carpet.

## **GALLEY 8'**

The galley has custom built units with Oak framed door and drawer fronts. Worktops are solid Granite with ceramic tiled splash-backs.

**Base units:** 1 x double cupboard that extends into the corners and has a drawer above. Full height oven housing with cupboards above and below. Fridge housing with matching door. Built-in wine rack.

**Wall Units:** 1 x glazed wall cabinet. 2 x wall mounted shelves.



**Appliances:** Belling, stainless steel eye-level oven and grill. Belling, stainless steel, inset four burner gas hob. Shoreline electric fridge. Shoreline, electric freezer. Domestic sized washer/dryer of choice. Beko dishwasher. Microwave. Stainless steel, under-slung sink with chrome monobloc tap.

**Heating:** Skirting radiator.

**Lighting:** 1 x large window. 1 x set of steel side doors, Oak panelled internally. 4 x 12v, recessed halogen down-lights.

**Power:** 4 x 240 sockets.

**Flooring:** Solid Oak.

## **BATHROOM 6' x 4'**



The cabin shower room has a white suite comprising:

**Suite:** Shower enclosure with chrome mixer taps, shower attachment and glazed doors. Corner vanity unit with large inset porcelain wash basin, chrome mixer tap and a cupboard beneath. Macerator pump-out toilet with remote holding tank. Full height cupboard accessed from the corridor. Large wall mounted mirror.

**Power:** 1 x shaver point.

**Heating:** 1 x rail radiator.

**Flooring:** Marble effect vinyl flooring.



**Lighting:** 1 x porthole with opening and privacy glass and a further porthole in the corridor. 1 x 12v, ceiling mounted, round light. 1 x 12v, shower light. 1 x 12v shaver light. 1 x 12v, light with extractor fan.

### **BEDROOM 11' (including rear steps)**



**Furniture:** 4'6" domestic sized fixed double bed with storage space and waste tank underneath. 1 x full height wardrobe. Cupboard housing the washer/dryer with shelves above. Electric cupboard. Large wall mounted corner cupboard. Wall mounted shelf above the bed. Rear storage steps.



**Heating:** Skirting radiator.

**Lighting:** 2 x portholes with opening or removable. 1 x 12v, ceiling mounted, round light. 2 x 12v, recessed halogen down-lights. 2 x 12v, reading lights mounted above the bed. 2 x 12v, recessed halogen lights in the rear steps.

**Power:** 2 x 240v socket.

**Flooring:** Carpet.

### **SEMI-TRAD DECK 4' & STERN 3'**

Steel rear doors Oak panelled internally with sliding roof hatch lead onto the semi-trad deck where there are access panels to the engine and batteries. There are steel locker/seats to either side of the semi-trad deck. Steel stern doors lead to the rear deck and steering position.

**Controls:** The single lever engine control is mounted just inside the stern doors on the starboard.

**Flooring:** Marine ply boards with anti-slip deck tread.



## SPECIFICATIONS

### **BUILDER**

High quality steelwork with beautiful Oak fit-out by Elton Moss Boatbuilders.

### **BUILD DETAILS**

New  
Trad, Semi-Trad or Cruiser Style  
10mm/6mm/5mm/4mm.

### **INSULATION**

Spray foam forms the insulation behind the cabin linings.

### **BALLAST**

Bricks under floorboards.

### **DIMENSIONS**

Overall Length:	58'
Cabin Length:	46' 6"
Width:	6' 10"
Interior Headroom:	6' 6"
Well Deck:	4'
Draught	1' 10"

### **WINDOWS, DOORS & HATCHES**

**Port:** 2 x brass portholes. 3 x large fully opening windows.  
**Starboard:** 2 x brass portholes. 2 x large fully opening windows. 1 x set of steel side doors, wood panelled internally.  
**Front:** Steel hatch on bow locker. Steel, half glazed front doors Oak panelled internally.  
**Rear:** Steel rear doors and sliding roof hatch, Oak panelled internally. Steel stern doors.

### **ENGINE & TRANSMISSION**

The boat is powered by a Isuzu 42 hp, 4 cylinder water cooled, marine diesel engine, coupled to a PRM 150 hydraulic gearbox turning the propeller. The exhaust is lagged, silenced and vents out under the side deck.  
The engine powers twin alternators to charge the start battery and the 4 leisure batteries.

### **BOW-THRUSTER**

Electric Bow-thruster with controls at the stern.

### **GAS**

1 x 13kg Propane cylinder with manual change-over, housed in the bow locker, provides gas to the oven, grill and hob.

### **WATER**

The 200 litre stainless steel water tank is located under the front well deck. Water pump with pressure switch and accumulator is housed in the front wardrobe. The twin coil calorifier is heated by the diesel fired central heating boiler and/or the engine heat exchanger.

### **HEATING**

Heating is provided by the Valour solid fuel stove in the lounge and the Webasto diesel fired boiler running skirting radiators.

### **ELECTRICS**

240v circuit from landline with RCD.  
12v lights throughout protected by fuses.  
2 x 12v, 110/80 amp/hr engine driven alternators.  
1 x 12v, 110 amp/hr engine start battery.  
4 x 12v, 110 amp/hr leisure batteries.  
Engine driven generator.  
1800w Powermaster inverter.  
25 amp Powermaster battery charger.

### **FIRE SAFETY**

3 x Dry Powder extinguishers  
1 x Fire Blankets

### **EXTERIOR FINISH**

The exterior finish in quality coach enamels. The hull is protected by black bitumen and 4 sacrificial anodes.

### **ADDITIONAL ITEMS OF INVENTORY**

The boat comes equipped with the normal cruising inventory including ropes and fenders. Any additional items not listed must be negotiated separately with the builder.

**PLEASE NOTE: The information contained in this brochure is based on our own inspection and information provided by the owner and is intended as a sales aid only to assist you to decide whether you would like to move to the next stage and view the boat for yourself. Measurements can only be taken as approximate. Nothing contained herein constitutes a contract or offer. This is not a survey. We always recommend that a full survey is carried out prior to purchase.**



# Boat Finder Brokerage Services

*Brokers of Fine Quality Inland Waterways Craft*

 : 01270 760799

 : 07732 366185

 : sales@boatfinderbrokerage.co.uk

 : www.boatfinderbrokerage.co.uk

Office address: Edwin Foden Business Centre, Moss Lan, Sandbach, Cheshire CW11 3AE



**REF: BN001**

**£99,995**

- High quality steelwork by Elton Moss Boatbuilders with Trad, Semi-Trad or Cruiser stern.
- 42hp Isuzu marine diesel engine with PRM 150 hydraulic gearbox.
- Modern stylish fit-out in Oak offering luxurious 6 berth accommodation.
- Engine driven generator.

- Electric Bow-thruster.
- Powermaster 1800w inverter.
- Spray foam insulation.
- Stainless steel water tank.
- Diesel fired central heating & S/F stove.
- Washer/dryer and dishwasher.

*Boat Finder Brokerage Services is a trading name of Boatfinder Brokerage Services Ltd. Reg'd No. 4923033  
Reg'd Address: Edwin Foden Business Centre, Moss Lane, Sandbach, Cheshire CW11 3JW*



**REF: BN001**

## **BROKER'S SUMMARY**

**58ft New Trad, Semi-Trad OR Cruiser style narrow boat.** High quality steelwork with side doors and superb paint finish by Elton Moss Boatbuilders. Stylish modern fit-out in Oak, offering luxurious 6 berth accommodation. Powered by a Isuzu 42hp, 4 cylinder marine diesel engine.

This boat is fully laden with high quality equipment and materials from the engine and bow-thruster through to its granite worktops and tongue and groove lining.

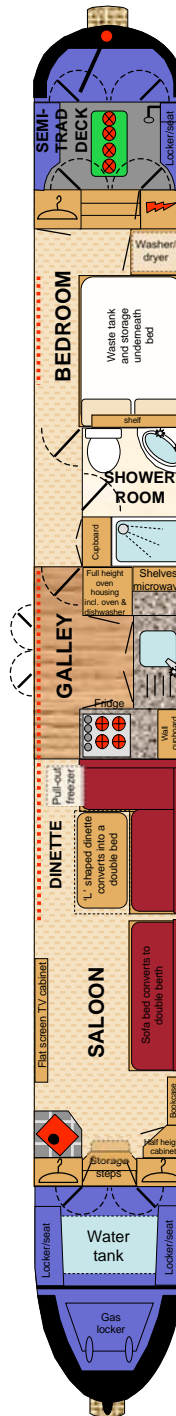
The builder is a highly reputable builder of bespoke boats and can therefore also build to your own specification.

This brochure provides an example specification for a previously completed boat, to provide an idea of the type of boat that can be built and the associated costs. A new boat can be built to this exact specification or changes can be made to create a truly bespoke boat (costs will vary depending on your requirements).

**NEW RECREATIONAL CRAFT DIRECTIVE CERTIFICATE OF CONFORMITY**

# LAYOUT DIAGRAM

(not to scale)





## **FROM THE BOW**

From the bow which holds the gas locker, there is a 4' self draining open well deck with locker/seats to either side. The bow thruster and the stainless steel water tank are located beneath the well deck with a surface mounted filler. The headlamp is mounted on the front of the roof.

## **GENERIC FIXTURES AND FITTINGS**

The ceilings are lined with 6mm Oak faced plywood with solid Oak trim. Hull sides are lined with 9mm Oak faced plywood with solid Oak trim. Cabin sides to the saloon and galley are lined with solid Oak tongue and groove laid diagonally, the rest of the cabin sides are lined with 9mm Oak faced plywood, all trimmed with solid Oak. All the interior wood has been varnished to a gloss finish.

## **LOUNGE 10' 9"**



Steel, half glazed front doors, Oak panelled internally open out onto the front deck with lit storage steps down into the saloon.

**Fixed Furniture:** 2 x full height wardrobes. 1 x half height corner cupboard. 1 x bookcase. TV cabinet with flat screen TV, DVD player and radio/CD player with speakers throughout the boat. Fitted sofa bed with high quality padded and upholstered cushions, that converts into a double berth.

**Heating:** Valour Willow, cast iron solid fuel stove set on a raised ceramic tiled hearth and surround.

**Lighting:** 2 x large opening and removable windows, 4 x 12v, recessed halogen down-lights. 1 x 12v, recessed halogen light in the front step.

**Power:** 4 x 240v sockets.

**Flooring:** Carpet.





## **DINETTE 6' 9"**

'L' shaped dinette with sloping backs for added comfort and high quality padded and upholstered cushions. Oak table top with folding legs. The dinette converts into a double bed and has storage space beneath the seats.

**Other Features:** Pull-out chest freezer housed beneath the dinette.

**Heating:** Skirting radiator.

**Lighting:** 2 x large opening or removable windows. 4 x 12v, recessed halogen down-lights. 3 x 12v, wall lights.

**Flooring:** Carpet.

## **GALLEY 8'**

The galley has custom built units with Oak framed door and drawer fronts. Worktops are solid Granite with ceramic tiled splash-backs.

**Base units:** 1 x double cupboard that extends into the corners and has a drawer above. Full height oven housing with cupboards above and below. Fridge housing with matching door. Built-in wine rack.

**Wall Units:** 1 x glazed wall cabinet. 2 x wall mounted shelves.



**Appliances:** Belling, stainless steel eye-level oven and grill. Belling, stainless steel, inset four burner gas hob. Shoreline electric fridge. Shoreline, electric freezer. Domestic sized washer/dryer of choice. Beko dishwasher. Microwave. Stainless steel, under-slung sink with chrome monobloc tap.

**Heating:** Skirting radiator.

**Lighting:** 1 x large window. 1 x set of steel side doors, Oak panelled internally. 4 x 12v, recessed halogen down-lights.

**Power:** 4 x 240 sockets.

**Flooring:** Solid Oak.

## **BATHROOM 6' x 4'**



The cabin shower room has a white suite comprising:

**Suite:** Shower enclosure with chrome mixer taps, shower attachment and glazed doors. Corner vanity unit with large inset porcelain wash basin, chrome mixer tap and a cupboard beneath. Macerator pump-out toilet with remote holding tank. Full height cupboard accessed from the corridor. Large wall mounted mirror.

**Power:** 1 x shaver point.

**Heating:** 1 x rail radiator.

**Flooring:** Marble effect vinyl flooring.



**Lighting:** 1 x porthole with opening and privacy glass and a further porthole in the corridor. 1 x 12v, ceiling mounted, round light. 1 x 12v, shower light. 1 x 12v shaver light. 1 x 12v, light with extractor fan.

### **BEDROOM 11' (including rear steps)**



**Furniture:** 4'6" domestic sized fixed double bed with storage space and waste tank underneath. 1 x full height wardrobe. Cupboard housing the washer/dryer with shelves above. Electric cupboard. Large wall mounted corner cupboard. Wall mounted shelf above the bed. Rear storage steps.



**Heating:** Skirting radiator.

**Lighting:** 2 x portholes with opening or removable. 1 x 12v, ceiling mounted, round light. 2 x 12v, recessed halogen down-lights. 2 x 12v, reading lights mounted above the bed. 2 x 12v, recessed halogen lights in the rear steps.

**Power:** 2 x 240v socket.

**Flooring:** Carpet.

### **SEMI-TRAD DECK 4' & STERN 3'**

Steel rear doors Oak panelled internally with sliding roof hatch lead onto the semi-trad deck where there are access panels to the engine and batteries. There are steel locker/seats to either side of the semi-trad deck. Steel stern doors lead to the rear deck and steering position.

**Controls:** The single lever engine control is mounted just inside the stern doors on the starboard.

**Flooring:** Marine ply boards with anti-slip deck tread.



## SPECIFICATIONS

<p><b>BUILDER</b> High quality steelwork with beautiful Oak fit-out by Elton Moss Boatbuilders.</p>	<p><b>WATER</b> The 200 litre stainless steel water tank is located under the front well deck. Water pump with pressure switch and accumulator is housed in the front wardrobe. The twin coil calorifier is heated by the diesel fired central heating boiler and/or the engine heat exchanger.</p>												
<p><b>BUILD DETAILS</b> New Trad, Semi-Trad or Cruiser Style 10mm/6mm/5mm/4mm.</p>	<p><b>HEATING</b> Heating is provided by the Valour solid fuel stove in the lounge and the Webasto diesel fired boiler running skirting radiators.</p>												
<p><b>INSULATION</b> Spray foam forms the insulation behind the cabin linings.</p>	<p><b>ELECTRICS</b> 240v circuit from landline with RCD. 12v lights throughout protected by fuses. 2 x 12v, 110/80 amp/hr engine driven alternators. 1 x 12v, 110 amp/hr engine start battery. 4 x 12v, 110 amp/hr leisure batteries. Engine driven generator. 1800w Powermaster inverter. 25 amp Powermaster battery charger.</p>												
<p><b>BALLAST</b> Bricks under floorboards.</p>	<p><b>FIRE SAFETY</b> 3 x Dry Powder extinguishers 1 x Fire Blankets</p>												
<p><b>DIMENSIONS</b></p> <table style="width: 100%; border-collapse: collapse;"> <tr> <td style="width: 70%;">Overall Length:</td> <td style="text-align: right;">58'</td> </tr> <tr> <td>Cabin Length:</td> <td style="text-align: right;">46' 6"</td> </tr> <tr> <td>Width:</td> <td style="text-align: right;">6' 10"</td> </tr> <tr> <td>Interior Headroom:</td> <td style="text-align: right;">6' 6"</td> </tr> <tr> <td>Well Deck:</td> <td style="text-align: right;">4'</td> </tr> <tr> <td>Draught</td> <td style="text-align: right;">1' 10"</td> </tr> </table>	Overall Length:	58'	Cabin Length:	46' 6"	Width:	6' 10"	Interior Headroom:	6' 6"	Well Deck:	4'	Draught	1' 10"	<p><b>EXTERIOR FINISH</b> The exterior finish in quality coach enamels. The hull is protected by black bitumen and 4 sacrificial anodes.</p>
Overall Length:	58'												
Cabin Length:	46' 6"												
Width:	6' 10"												
Interior Headroom:	6' 6"												
Well Deck:	4'												
Draught	1' 10"												
<p><b>WINDOWS, DOORS &amp; HATCHES</b> <b>Port:</b> 2 x brass portholes. 3 x large fully opening windows. <b>Starboard:</b> 2 x brass portholes. 2 x large fully opening windows. 1 x set of steel side doors, wood panelled internally. <b>Front:</b> Steel hatch on bow locker. Steel, half glazed front doors Oak panelled internally. <b>Rear:</b> Steel rear doors and sliding roof hatch, Oak panelled internally. Steel stern doors.</p>	<p><b>ADDITIONAL ITEMS OF INVENTORY</b> The boat comes equipped with the normal cruising inventory including ropes and fenders. Any additional items not listed must be negotiated separately with the builder.</p>												
<p><b>ENGINE &amp; TRANSMISSION</b> The boat is powered by a Isuzu 42 hp, 4 cylinder water cooled, marine diesel engine, coupled to a PRM 150 hydraulic gearbox turning the propeller. The exhaust is lagged, silenced and vents out under the side deck. The engine powers twin alternators to charge the start battery and the 4 leisure batteries.</p>													
<p><b>BOW-THRUSTER</b> Electric Bow-thruster with controls at the stern.</p>													
<p><b>GAS</b> 1 x 13kg Propane cylinder with manual change-over, housed in the bow locker, provides gas to the oven, grill and hob.</p>													

**PLEASE NOTE:** *The information contained in this brochure is based on our own inspection and information provided by the owner and is intended as a sales aid only to assist you to decide whether you would like to move to the next stage and view the boat for yourself. Measurements can only be taken as approximate. Nothing contained herein constitutes a contract or offer. This is not a survey. We always recommend that a full survey is carried out prior to purchase.*



# Boat Finder Brokerage Services

*Brokers of Fine Quality Inland Waterways Craft*

 : 01270 760799

 : 07732 366185

 : sales@boatfinderbrokerage.co.uk

 : www.boatfinderbrokerage.co.uk

Office address: Edwin Foden Business Centre, Moss Lan, Sandbach, Cheshire CW11 3AE



**REF: BN001**

**£99,995**

- High quality steelwork by Elton Moss Boatbuilders with Trad, Semi-Trad or Cruiser stern.
- 42hp Isuzu marine diesel engine with PRM 150 hydraulic gearbox.
- Modern stylish fit-out in Oak offering luxurious 6 berth accommodation.
- Engine driven generator.

- Electric Bow-thruster.
- Powermaster 1800w inverter.
- Spray foam insulation.
- Stainless steel water tank.
- Diesel fired central heating & S/F stove.
- Washer/dryer and dishwasher.

*Boat Finder Brokerage Services is a trading name of Boatfinder Brokerage Services Ltd. Reg'd No. 4923033  
Reg'd Address: Edwin Foden Business Centre, Moss Lane, Sandbach, Cheshire CW11 3JW*



**REF: BN001**

## **BROKER'S SUMMARY**

**58ft New Trad, Semi-Trad OR Cruiser style narrow boat.** High quality steelwork with side doors and superb paint finish by Elton Moss Boatbuilders. Stylish modern fit-out in Oak, offering luxurious 6 berth accommodation. Powered by a Isuzu 42hp, 4 cylinder marine diesel engine.

This boat is fully laden with high quality equipment and materials from the engine and bow-thruster through to its granite worktops and tongue and groove lining.

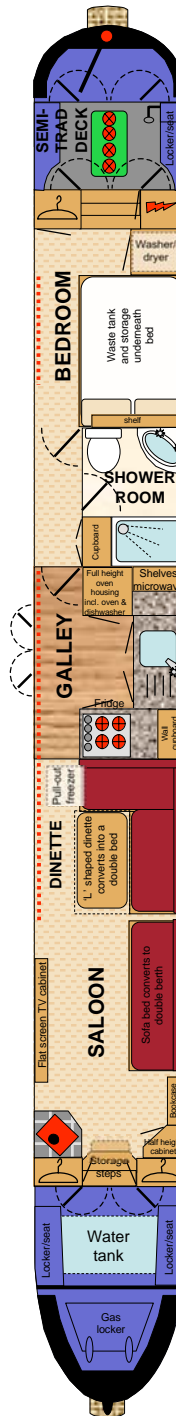
The builder is a highly reputable builder of bespoke boats and can therefore also build to your own specification.

This brochure provides an example specification for a previously completed boat, to provide an idea of the type of boat that can be built and the associated costs. A new boat can be built to this exact specification or changes can be made to create a truly bespoke boat (costs will vary depending on your requirements).

**NEW RECREATIONAL CRAFT DIRECTIVE CERTIFICATE OF CONFORMITY**

# LAYOUT DIAGRAM

(not to scale)





## **FROM THE BOW**

From the bow which holds the gas locker, there is a 4' self draining open well deck with locker/seats to either side. The bow thruster and the stainless steel water tank are located beneath the well deck with a surface mounted filler. The headlamp is mounted on the front of the roof.

## **GENERIC FIXTURES AND FITTINGS**

The ceilings are lined with 6mm Oak faced plywood with solid Oak trim. Hull sides are lined with 9mm Oak faced plywood with solid Oak trim. Cabin sides to the saloon and galley are lined with solid Oak tongue and groove laid diagonally, the rest of the cabin sides are lined with 9mm Oak faced plywood, all trimmed with solid Oak. All the interior wood has been varnished to a gloss finish.

## **LOUNGE 10' 9"**



Steel, half glazed front doors, Oak panelled internally open out onto the front deck with lit storage steps down into the saloon.

**Fixed Furniture:** 2 x full height wardrobes. 1 x half height corner cupboard. 1 x bookcase. TV cabinet with flat screen TV, DVD player and radio/CD player with speakers throughout the boat. Fitted sofa bed with high quality padded and upholstered cushions, that converts into a double berth.

**Heating:** Valour Willow, cast iron solid fuel stove set on a raised ceramic tiled hearth and surround.

**Lighting:** 2 x large opening and removable windows, 4 x 12v, recessed halogen down-lights. 1 x 12v, recessed halogen light in the front step.

**Power:** 4 x 240v sockets.

**Flooring:** Carpet.





## **DINETTE 6' 9"**

'L' shaped dinette with sloping backs for added comfort and high quality padded and upholstered cushions. Oak table top with folding legs. The dinette converts into a double bed and has storage space beneath the seats.

**Other Features:** Pull-out chest freezer housed beneath the dinette.

**Heating:** Skirting radiator.

**Lighting:** 2 x large opening or removable windows. 4 x 12v, recessed halogen down-lights. 3 x 12v, wall lights.

**Flooring:** Carpet.

## **GALLEY 8'**

The galley has custom built units with Oak framed door and drawer fronts. Worktops are solid Granite with ceramic tiled splash-backs.

**Base units:** 1 x double cupboard that extends into the corners and has a drawer above. Full height oven housing with cupboards above and below. Fridge housing with matching door. Built-in wine rack.

**Wall Units:** 1 x glazed wall cabinet. 2 x wall mounted shelves.



**Appliances:** Belling, stainless steel eye-level oven and grill. Belling, stainless steel, inset four burner gas hob. Shoreline electric fridge. Shoreline, electric freezer. Domestic sized washer/dryer of choice. Beko dishwasher. Microwave. Stainless steel, under-slung sink with chrome monobloc tap.

**Heating:** Skirting radiator.

**Lighting:** 1 x large window. 1 x set of steel side doors, Oak panelled internally. 4 x 12v, recessed halogen down-lights.

**Power:** 4 x 240 sockets.

**Flooring:** Solid Oak.

## **BATHROOM 6' x 4'**



The cabin shower room has a white suite comprising:

**Suite:** Shower enclosure with chrome mixer taps, shower attachment and glazed doors. Corner vanity unit with large inset porcelain wash basin, chrome mixer tap and a cupboard beneath. Macerator pump-out toilet with remote holding tank. Full height cupboard accessed from the corridor. Large wall mounted mirror.

**Power:** 1 x shaver point.

**Heating:** 1 x rail radiator.

**Flooring:** Marble effect vinyl flooring.



**Lighting:** 1 x porthole with opening and privacy glass and a further porthole in the corridor. 1 x 12v, ceiling mounted, round light. 1 x 12v, shower light. 1 x 12v shaver light. 1 x 12v, light with extractor fan.

### **BEDROOM 11' (including rear steps)**



**Furniture:** 4'6" domestic sized fixed double bed with storage space and waste tank underneath. 1 x full height wardrobe. Cupboard housing the washer/dryer with shelves above. Electric cupboard. Large wall mounted corner cupboard. Wall mounted shelf above the bed. Rear storage steps.



**Heating:** Skirting radiator.

**Lighting:** 2 x portholes with opening or removable. 1 x 12v, ceiling mounted, round light. 2 x 12v, recessed halogen down-lights. 2 x 12v, reading lights mounted above the bed. 2 x 12v, recessed halogen lights in the rear steps.

**Power:** 2 x 240v socket.

**Flooring:** Carpet.

### **SEMI-TRAD DECK 4' & STERN 3'**

Steel rear doors Oak panelled internally with sliding roof hatch lead onto the semi-trad deck where there are access panels to the engine and batteries. There are steel locker/seats to either side of the semi-trad deck. Steel stern doors lead to the rear deck and steering position.

**Controls:** The single lever engine control is mounted just inside the stern doors on the starboard.

**Flooring:** Marine ply boards with anti-slip deck tread.



## SPECIFICATIONS

<p><b>BUILDER</b> High quality steelwork with beautiful Oak fit-out by Elton Moss Boatbuilders.</p>	<p><b>WATER</b> The 200 litre stainless steel water tank is located under the front well deck. Water pump with pressure switch and accumulator is housed in the front wardrobe. The twin coil calorifier is heated by the diesel fired central heating boiler and/or the engine heat exchanger.</p>												
<p><b>BUILD DETAILS</b> New Trad, Semi-Trad or Cruiser Style 10mm/6mm/5mm/4mm.</p>	<p><b>HEATING</b> Heating is provided by the Valour solid fuel stove in the lounge and the Webasto diesel fired boiler running skirting radiators.</p>												
<p><b>INSULATION</b> Spray foam forms the insulation behind the cabin linings.</p>	<p><b>ELECTRICS</b> 240v circuit from landline with RCD. 12v lights throughout protected by fuses. 2 x 12v, 110/80 amp/hr engine driven alternators. 1 x 12v, 110 amp/hr engine start battery. 4 x 12v, 110 amp/hr leisure batteries. Engine driven generator. 1800w Powermaster inverter. 25 amp Powermaster battery charger.</p>												
<p><b>BALLAST</b> Bricks under floorboards.</p>	<p><b>FIRE SAFETY</b> 3 x Dry Powder extinguishers 1 x Fire Blankets</p>												
<p><b>DIMENSIONS</b></p> <table style="width: 100%; border-collapse: collapse;"> <tr> <td style="width: 70%;">Overall Length:</td> <td style="text-align: right;">58'</td> </tr> <tr> <td>Cabin Length:</td> <td style="text-align: right;">46' 6"</td> </tr> <tr> <td>Width:</td> <td style="text-align: right;">6' 10"</td> </tr> <tr> <td>Interior Headroom:</td> <td style="text-align: right;">6' 6"</td> </tr> <tr> <td>Well Deck:</td> <td style="text-align: right;">4'</td> </tr> <tr> <td>Draught</td> <td style="text-align: right;">1' 10"</td> </tr> </table>	Overall Length:	58'	Cabin Length:	46' 6"	Width:	6' 10"	Interior Headroom:	6' 6"	Well Deck:	4'	Draught	1' 10"	<p><b>EXTERIOR FINISH</b> The exterior finish in quality coach enamels. The hull is protected by black bitumen and 4 sacrificial anodes.</p>
Overall Length:	58'												
Cabin Length:	46' 6"												
Width:	6' 10"												
Interior Headroom:	6' 6"												
Well Deck:	4'												
Draught	1' 10"												
<p><b>WINDOWS, DOORS &amp; HATCHES</b> <b>Port:</b> 2 x brass portholes. 3 x large fully opening windows. <b>Starboard:</b> 2 x brass portholes. 2 x large fully opening windows. 1 x set of steel side doors, wood panelled internally. <b>Front:</b> Steel hatch on bow locker. Steel, half glazed front doors Oak panelled internally. <b>Rear:</b> Steel rear doors and sliding roof hatch, Oak panelled internally. Steel stern doors.</p>	<p><b>ADDITIONAL ITEMS OF INVENTORY</b> The boat comes equipped with the normal cruising inventory including ropes and fenders. Any additional items not listed must be negotiated separately with the builder.</p>												
<p><b>ENGINE &amp; TRANSMISSION</b> The boat is powered by a Isuzu 42 hp, 4 cylinder water cooled, marine diesel engine, coupled to a PRM 150 hydraulic gearbox turning the propeller. The exhaust is lagged, silenced and vents out under the side deck. The engine powers twin alternators to charge the start battery and the 4 leisure batteries.</p>													
<p><b>BOW-THRUSTER</b> Electric Bow-thruster with controls at the stern.</p>													
<p><b>GAS</b> 1 x 13kg Propane cylinder with manual change-over, housed in the bow locker, provides gas to the oven, grill and hob.</p>													

**PLEASE NOTE:** *The information contained in this brochure is based on our own inspection and information provided by the owner and is intended as a sales aid only to assist you to decide whether you would like to move to the next stage and view the boat for yourself. Measurements can only be taken as approximate. Nothing contained herein constitutes a contract or offer. This is not a survey. We always recommend that a full survey is carried out prior to purchase.*